

**DEDICATION**

WHEREAS, MORANO ENTERPRISES ARIZONA, L.L.C., AN ARIZONA LIMITED LIABILITY COMPANY ("MORANO ENTERPRISES ARIZONA, L.L.C."), AS OWNER, HEREBY SUBDIVIDES UNDER THE NAME OF "FIRECLIFF UNIT ONE" PORTIONS OF SECTION 18, TOWNSHIP 16 NORTH, RANGE 6 EAST, GILA AND SALT RIVER BASE AND MERIDIAN, YAVAPAI COUNTY, ARIZONA (THE "PROPERTY"), AS SHOWN HEREIN.

MORANO ENTERPRISES ARIZONA, L.L.C., HEREBY DECLARES THAT THE PLAT SETS FORTH THE LOCATION AND GIVES THE DIMENSIONS OF THE LOTS, TRACTS AND STREETS, CONSTITUTING SAME AND EACH LOT, TRACT AND STREET SHALL BE KNOWN BY THE NUMBER, LETTER OR NAME GIVEN EACH RESPECTIVELY HERON. MORANO ENTERPRISES ARIZONA, L.L.C., HEREBY DEDICATES TO THE PUBLIC, FOR USE AS SUCH, THE STREET KNOWN AS "SUNGLIFFE DRIVE" AND ALL EASEMENTS SHOWN HEREON FOR THE PURPOSES SET FORTH HERON.

MORANO ENTERPRISES ARIZONA, L.L.C., HEREBY DECLARES THAT TRACTS "A", "B", "C", "D", "E", "F", "G" SHALL BE COMMON AREA FOR THE USE AND ENJOYMENT OF THE FIRECLIFF COMMUNITY ASSOCIATION, AN ARIZONA NONPROFIT CORPORATION (FIRECLIFF COMMUNITY ASSOCIATION) AND SUCH TRACTS SHALL BE OWNED AND MAINTAINED BY THE FIRECLIFF COMMUNITY ASSOCIATION.

MORANO ENTERPRISES ARIZONA, L.L.C., HEREBY DECLARES THAT TRACTS "B" AND "C" SHALL BE SUBJECT TO DRAINAGE AND SANITARY SEWER EASEMENTS AS SET FORTH HERON.

MORANO ENTERPRISES ARIZONA, L.L.C., HEREBY DECLARES THAT TRACT "C" SHALL BE COMMON AREA FOR THE USE AND ENJOYMENT OF THE FIRECLIFF COMMUNITY ASSOCIATION AND SUCH TRACTS SHALL BE OWNED AND MAINTAINED BY THE FIRECLIFF COMMUNITY ASSOCIATION, SUBJECT TO EXCLUSIVE DRIVEWAY AND PARKING EASEMENT GRANTED PURSUANT TO THE DECLARATION OF COVENANTS, CONDITIONS AND RESTRICTIONS FOR FIRECLIFF TO BE RECORDED CONCURRENTLY HERWITH. MORANO ENTERPRISES ARIZONA, L.L.C., HEREBY GRANTS OVER SUCH TRACTS EASEMENTS TO THE APPLICABLE UTILITY COMPANIES AND SERVICE PROVIDERS FOR (I) THE INSTALLATION, OPERATION AND FURNISHING OF MAINTENANCE OF PUBLIC UTILITY LINES AND FACILITIES, INCLUDING WITHOUT LIMITATION, WATER, SEWER, ELECTRICITY, GAS, TELEPHONE AND CABLE T.V. AND (II) INGRESS AND EGRESS FOR THE OPERATION AND MAINTENANCE OF SUCH UTILITIES, SERVICE VEHICLES AND FIRE PROTECTION, POLICE AND EMERGENCY SERVICE VEHICLES.

MORANO ENTERPRISES ARIZONA, L.L.C., HEREBY DECLARES THAT TRACT "C" SHALL BE A PRIVATE STREET FOR THE USE AND ENJOYMENT OF THE FIRECLIFF PROPERTY OWNERS OVER WHICH IS HEREBY GRANTED TO THE APPLICABLE UTILITY COMPANIES AND SERVICE PROVIDERS EASEMENTS (I) FOR THE INSTALLATION, OPERATION AND FURNISHING OF MAINTENANCE OF PUBLIC UTILITY LINES AND FACILITIES, INCLUDING WITHOUT LIMITATION, WATER, SEWER, ELECTRICITY, GAS, TELEPHONE AND CABLE T.V. AND (II) INGRESS AND EGRESS FOR THE OPERATION AND MAINTENANCE OF SUCH UTILITIES, TRASH REMOVAL, SERVICE VEHICLES AND FIRE PROTECTION, POLICE AND EMERGENCY SERVICE VEHICLES. TRACT "C" SHALL BE OWNED AND MAINTAINED BY THE FIRECLIFF COMMUNITY ASSOCIATION.

CONSTRUCTION OF PUBLIC UTILITIES WITHIN TRACTS SHALL BE LIMITED TO UNDERGROUND INSTALLATION.

DATED THIS 13<sup>th</sup> DAY OF February, 2002.

MORANO ENTERPRISES ARIZONA, L.L.C., AN ARIZONA LIMITED LIABILITY COMPANY

BY: Anthony Curto  
ANTHONY CURTO, MANAGER

**ACKNOWLEDGEMENT**

ON THIS THE 13<sup>th</sup> DAY OF February, 2002, BEFORE ME, THE UNDERSIGNED AGENT, PERSONALLY APPEARED Anthony Curto WHO ACKNOWLEDGED HIMSELF/HERSELF TO BE THE AGENT OF MORANO ENTERPRISES ARIZONA, L.L.C., AND EXECUTED THE FOREGOING INSTRUMENT FOR THE PURPOSE THEREIN CONTAINED BY SIGNING THE NAME OF THE CORPORATION BY HIMSELF/HERSELF AS SUCH AGENT, IN WITNESS WHEREOF, I HERETO SET MY HAND.

MY COMMISSION EXPIRES: 5/31/2005



**SURVEYORS/ENGINEERS CERTIFICATION**

THIS IS TO CERTIFY THAT THE SURVEY AND SUBDIVISION OF THE PREMISES DESCRIBED AND PLATTED HEREON WERE MADE UNDER MY DIRECTION. THAT THE SURVEY IS TRUE AND COMPLETE AS SHOWN, THAT ALL MONUMENTS SHOWN ACTUALLY EXIST OR WILL BE SET AS SHOWN, THAT THEIR POSITIONS ARE CORRECTLY SHOWN, THAT SAID MONUMENTS ARE SUFFICIENT TO ENABLE THE SURVEY TO BE RETRACED, THAT THE PLAT IS IN SUBSTANTIAL CONFORMANCE TO THE APPROVED PRELIMINARY PLAT AND THAT THIS PLAT IS CORRECT AND ACCURATE AS SHOWN.

BY: Stephen F. Patterson  
STEPHEN F. PATTERSON #11279



**ASSURANCES**

SATISFACTORY ASSURANCE IN THE FORM OF An Escrow Agreement IN THE AMOUNT OF \$1,155,316

HAS BEEN PROVIDED IN THE AMOUNT OF \$1,155,316 TO GUARANTEE THE FULFILLMENT OF THE OBLIGATIONS OF THE AGENT AND THE REQUIRED ELEMENTS IN THE SUBDIVISION, ELECTRIC AND PHONE UTILITY SERVICES HAVE BEEN ASSURED BY LETTER FROM THE APPROPRIATE UTILITY COMPANY 1/15/02

APPROVED BY THE YAVAPAI COUNTY BOARD OF SUPERVISORS THIS 15<sup>th</sup> DAY OF October, 2002

BY: James A. Burt CHAIRMAN  
ATTEST: Stephane M. Miller CLERK OF THE BOARD  
SEE RESTRICTIONS BOOK 384 OF OFFICIAL RECORDS, PAGE 816, YAVAPAI COUNTY RECORDS OFFICE. 1/15/02 BR 3916 Page 899 1/15/02 DATE

A FINAL PLAT OF  
**FIRECLIFF, UNIT ONE**  
44/76

A PLANNED AREA DEVELOPMENT IN SECTION 18, TOWNSHIP 16 NORTH, RANGE 6 EAST, OF THE GILA AND SALT RIVER BASE AND MERIDIAN, YAVAPAI COUNTY, ARIZONA

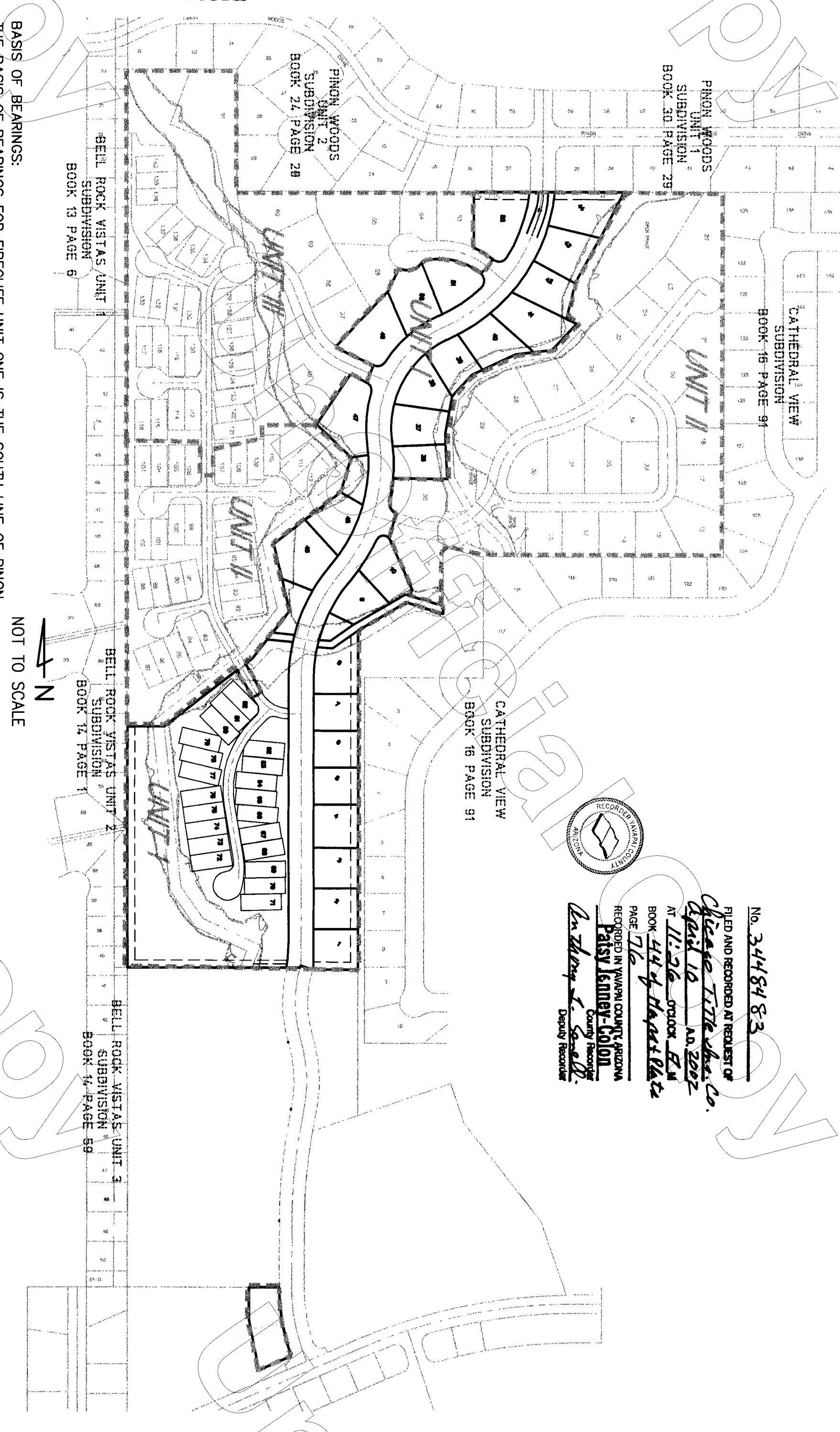
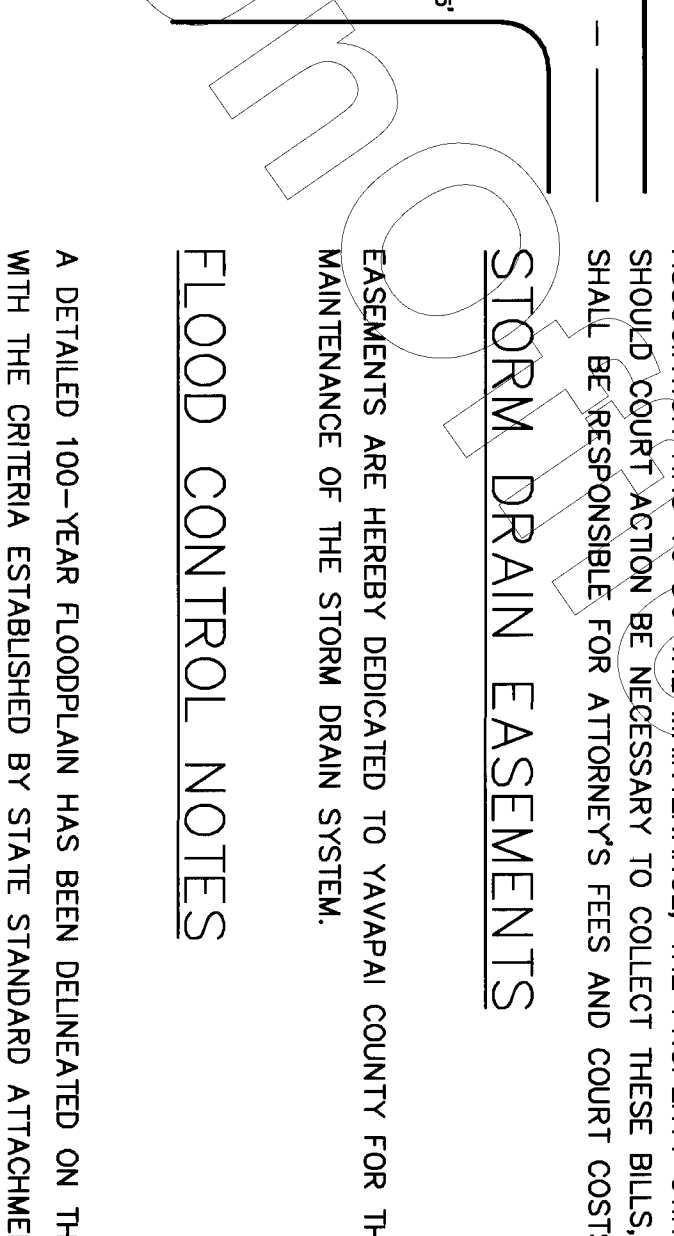
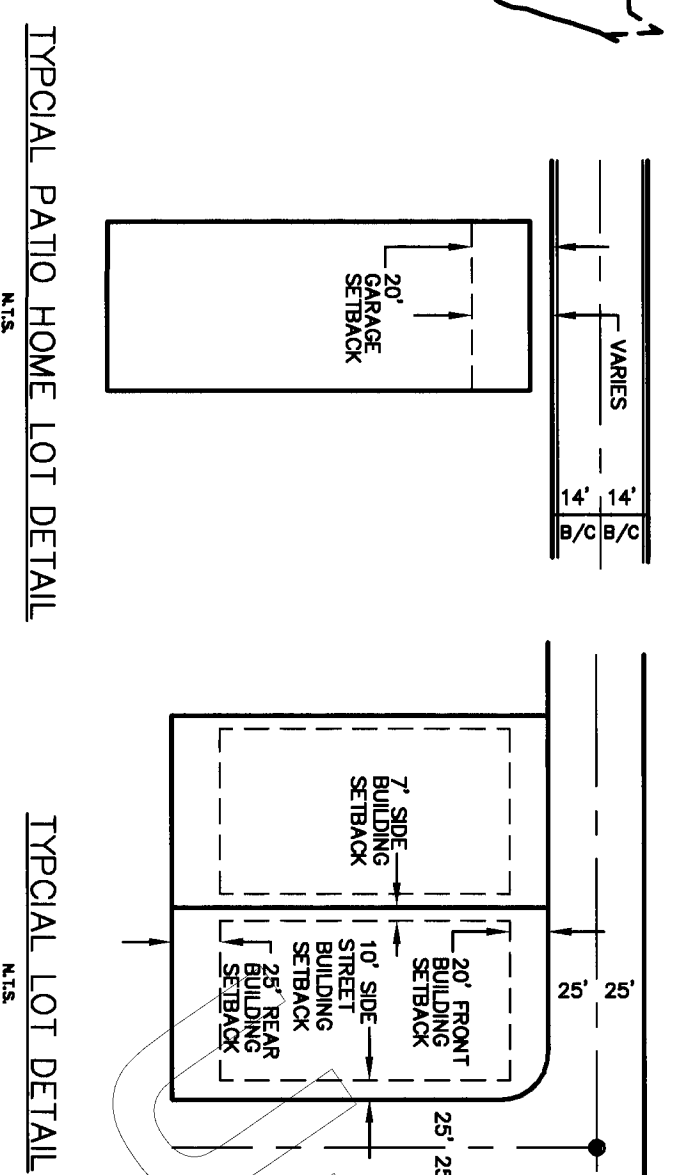
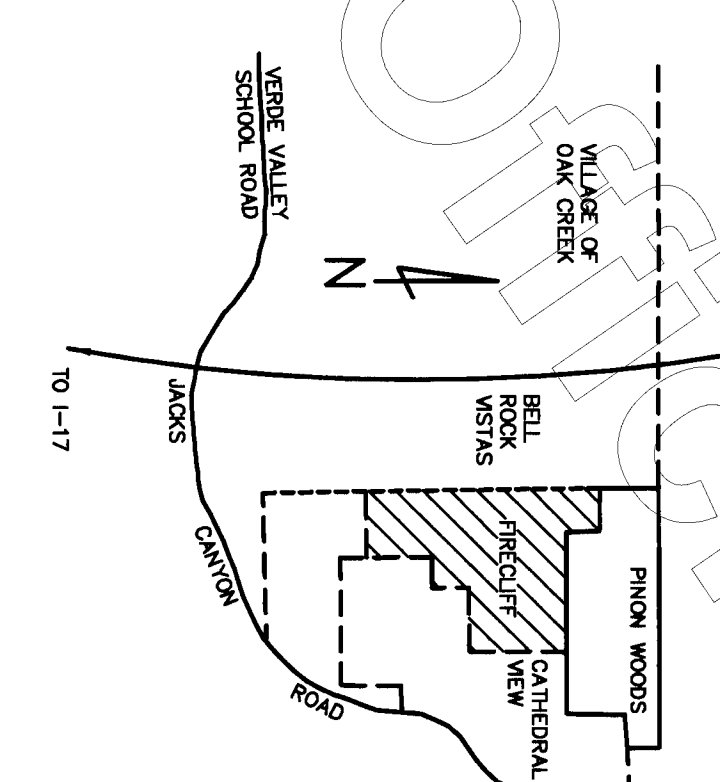
**SUMMARY OF RECREATION / OPEN SPACE**

TRACT "A" - PERMANENT OPEN SPACE	0.42 AC
TRACT "B" - HIKING TRAIL/OPEN SPACE	0.20 AC
TRACT "D" - COMMON FACILITIES	0.36 AC
TRACT "E" - OPEN SPACE/FLOODWAY/DRIVEWAYS	1.11 AC
TRACT "G" - OPEN SPACE	3.22 AC
<b>TOTAL OPEN SPACE PROVIDED=</b>	<b>5.31 AC.</b>
<b>TOTAL OPEN SPACE REQUIRED=</b>	<b>5.27 AC.</b>

**SUMMARY OF AREAS & LAND USES**

TRACT "A,B,D,E,G" - OPEN SPACE	5.31 AC.
TRACT "C" - COMMON PRIVATE DRIVE	0.49 AC.
SINGLE FAMILY LOTS	9.22 AC
PATIO HOME LOTS	2.31 AC
RIGHT OF WAY	3.76 AC
LOT 141&142	0.42 AC
<b>TOTAL</b>	<b>21.51 AC</b>

**LOCATION MAP**



**NOT TO SCALE**

UNIT I  
UNIT II  
UNIT III  
UNIT IV

PINON WOODS SUBDIVISION BOOK 21, PAGE 28  
BELL ROCK VISTAS UNIT 2 SUBDIVISION BOOK 13 PAGE 6  
BELL ROCK VISTAS UNIT 3 SUBDIVISION BOOK 14, PAGE 59  
CATHEDRAL VIEW SUBDIVISION BOOK 16 PAGE 91  
CATHEDRAL VIEW SUBDIVISION BOOK 16 PAGE 91

**OWNER/DEVELOPER**

MORANO ENTERPRISES ARIZONA, L.L.C.,  
7550 E. COCHISE DRIVE  
SCOTTSDALE, AZ, 85258  
ATTN: ANTHONY CURTO  
PHONE (480) 991-6396

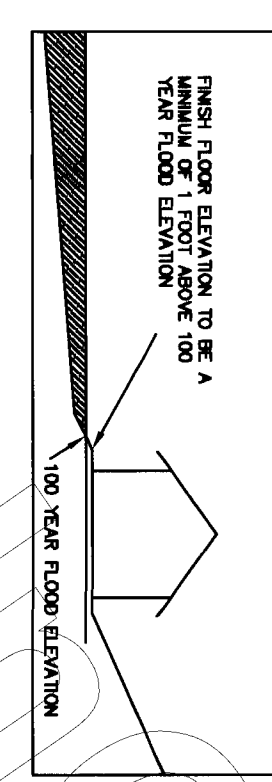
**ENGINEER**

FLEET - FISHER ENGINEERING, INC.  
4450 E. CAMELBACK RD., SUITE 410K  
PHOENIX, ARIZONA 85018  
ATTN: STEVE PATTERSON, P.E. 11238  
PHONE: (602) 264-3335

**BENCH MARK**

BM 1 - SET 5/8" FORM PIN LOCATED AT THE SOUTH BOUNDARY OF PINON WOODS CURB OF SUNGLIFFE DRIVE. ELEVATION 4142.22 USGS DATUM

**TYPICAL LOT DETAIL**



**CLASS II DRAINAGE EASEMENT**

EASEMENTS ARE HEREBY GRANTED TO THE FIRECLIFF PROPERTY OWNERS AND THE FIRECLIFF COMMUNITY ASSOCIATION OF THIS SUBDIVISION FOR DRAINAGE PURPOSES AS SHOWN ON THIS PLAT IN THE AREAS MARKED DRAINAGE EASEMENT CLASS II. THE PROPERTY OWNER(S) OF THE PARTICULAR LOT OR PARCEL WHICH INCLUDES A DRAINAGE EASEMENT IS RESPONSIBLE FOR MAINTAINING THE DRAINAGE EASEMENTS CONFORM TO AS IT WAS WHEN THE SUBDIVISION WAS APPROVED. DRAINAGE EASEMENTS CONFORM TO THE NATURAL OR MAN-MADE WATERCOURSES AND SHALL NOT BE MOVED FROM THE LOCATION EXISTING AT THE TIME OF THE APPROVAL OF THE SUBDIVISION (UNLESS APPROVED BY THE FIRECLIFF COMMUNITY ASSOCIATION).

**STORM DRAIN EASEMENTS**

IF THE DRAINAGE EASEMENTS ARE NOT ADEQUATELY MAINTAINED, THE FIRECLIFF COMMUNITY ASSOCIATION WILL NOT BE RESPONSIBLE OR LIABLE FOR ANY DAMAGE HOWEVER, IF THE AUTHORITY TO ENTER ONTO THE SITE AND MAINTAIN THE DRAINAGE EASEMENTS, IF THE ASSOCIATION HAS TO DO THE MAINTENANCE, THE PROPERTY OWNER(S) WILL BE BILLED. SHOULD COURT ACTION BE NECESSARY TO COLLECT THESE BILLS, THE PROPERTY OWNER(S) SHALL BE RESPONSIBLE FOR ATTORNEY'S FEES AND COURT COSTS.

**FLOOD CONTROL NOTES**

A DETAILED 100-YEAR FLOODPLAIN HAS BEEN DELINEATED ON THIS PLAT IN ACCORDANCE WITH THE CRITERIA ESTABLISHED BY STATE STANDARD ATTACHMENT (SSA 2-96) UNDER THE AUTHORITY OF THE DIRECTOR OF THE ARIZONA DEPARTMENT OF WATER RESOURCES. THE AREA HEREON, WITHIN THE 100-YEAR FLOODPLAIN LIMITS REPRESENTS AN AREA SUBJECT TO FLOODING FROM THE REGULATORY FLOOD EVENT. ALL DEVELOPMENT AND USES WITHIN THIS AREA IS SUBJECT TO THE REQUIREMENTS OF THE YAVAPAI COUNTY FLOOD CONTROL DISTRICT ORDINANCE.

A FLOODWAY AND MINIMUM FINISHED FLOOR ELEVATIONS FOR LOTS 8-10, 36-44, 45-47, 71-82 HAVE BEEN ESTABLISHED AND PRESENTED ON THIS PLAT. ADDITIONALLY, RESTRICTIVE BUILDING ENVELOPES HAVE BEEN ESTABLISHED AND PROVIDED FOR THOSE LOTS AND THOSE AFFECTED BY OTHER DRAINAGE RELATED FACILITIES, PLACING THEM OUTSIDE THE 100-YEAR FLOODPLAIN. FLOODPLAIN LIMITS, BASE FLOOD ELEVATIONS AND REGULATORY ELEVATIONS MAY BE MODIFIED BY SUBSEQUENT STUDIES APPROVED BY THE YAVAPAI COUNTY FLOOD CONTROL DISTRICT.

NO CHAIN LINK, WOVEN WIRE OR BLOCK WALL FENCES ARE TO BE PLACED WITHIN THE 100-YEAR FLOOD AREAS (OR THOSE AREAS NECESSARY TO CONVEY STORM RUNOFF FROM THE SUBDIVISION). PRIOR TO ANY WORK BEING CONDUCTED WITHIN THESE WATERCOURSES, THE PROPERTY OWNER(S) SHALL VERIFY THAT SUCH MAINTENANCE ACTIVITY COMPLIES WITH ALL APPLICABLE FEDERAL, STATE AND LOCAL REQUIREMENTS INCLUDING BUT NOT LIMITED TO THE CORPS OF ENGINEERS 404 PERMIT REQUIREMENTS.

**APPROVALS**

THIS PLAT HAS BEEN CHECKED FOR CONFORMANCE TO THE APPROVED PRELIMINARY PLAT AND ANY SPECIAL CONDITIONS ATTACHED THERETO. TO THE REQUIREMENTS OF THE YAVAPAI COUNTY SUBDIVISION REGULATIONS, AND ANY OTHER APPLICABLE REGULATION, AND APPEARS TO COMPLY WITH ALL REQUIREMENTS WITHIN MY JURISDICTION TO CHECK AND EVALUATE.

APPROVED BY: Kevin J. Fleet DATE 3-6-02  
YAVAPAI COUNTY ENGINEER

APPROVED BY: William J. ... DATE March 02  
YAVAPAI COUNTY ENVIRONMENTAL SERVICES DIRECTOR

APPROVED BY: James A. Burt DATE 02/29/02  
YAVAPAI COUNTY FLOOD CONTROL DISTRICT ADMINISTRATOR

APPROVED BY: Stephane M. Miller DATE 4/8/02  
YAVAPAI COUNTY PLANNING DIRECTOR

THIS SUBDIVISION IS IN COMPLIANCE WITH THE POLICY STATEMENT CONCERNING RECORDING SUBDIVISIONS ADOPTED BY THE BOARD OF SUPERVISORS 25 NOVEMBER 1985. IT IS RELEASED FOR RECORDATION.

APPROVED BY: Stephane M. Miller DATE 4/8/02  
YAVAPAI COUNTY PLANNING AND BUILDING DIRECTOR

THIS SUBDIVISION IS LOCATED WITHIN AN AREA DESIGNATED AS HAVING ADEQUATE WATER SUPPLY, PURSUANT TO A.R.S. 45-108 SUBSECTION "E".

APPROVED BY: Stephane M. Miller  
YAVAPAI COUNTY PLANNING AND BUILDING DIRECTOR

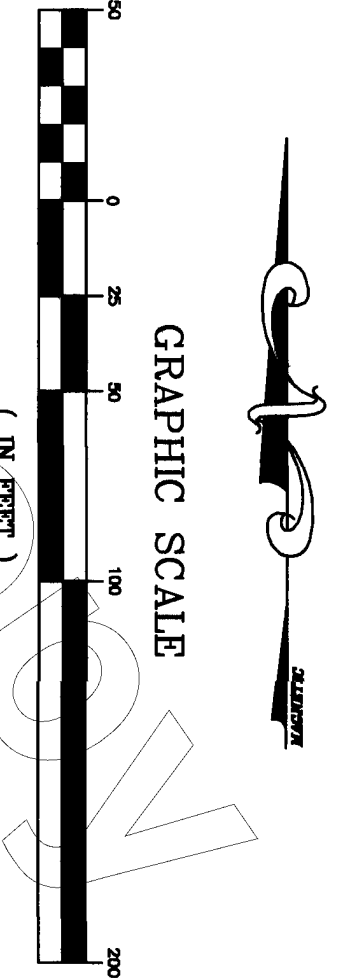
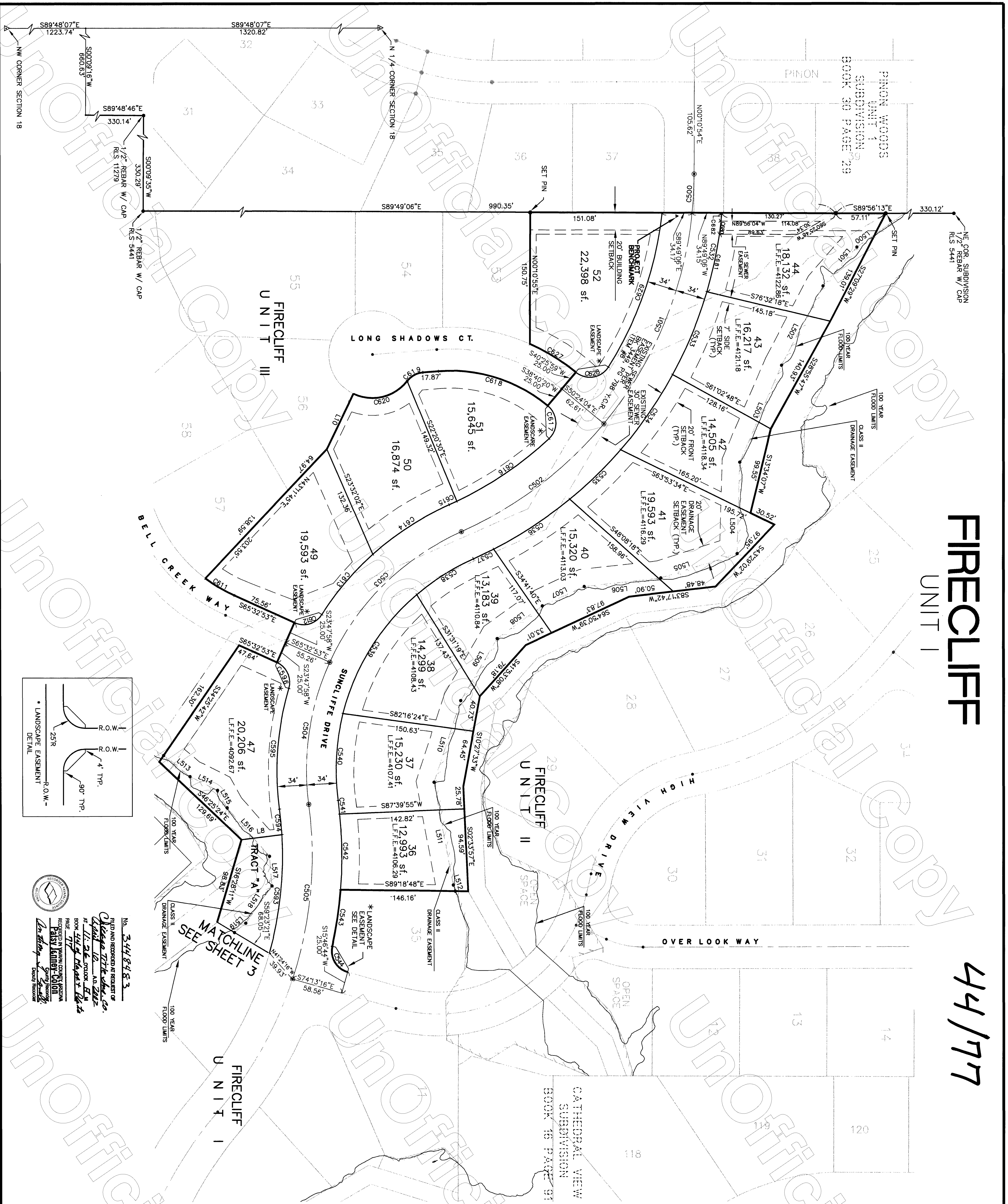
GROSS AREA = 21.51 ACRES

**FLEET • FISHER ENGINEERING INC.**  
4450 EAST CAMELBACK RD., SUITE 410K  
PHOENIX, ARIZONA 85018 PH. (602) 264-3335

JOB NO. 0053-019 1 OF 4

# FIRECLIFF UNIT I

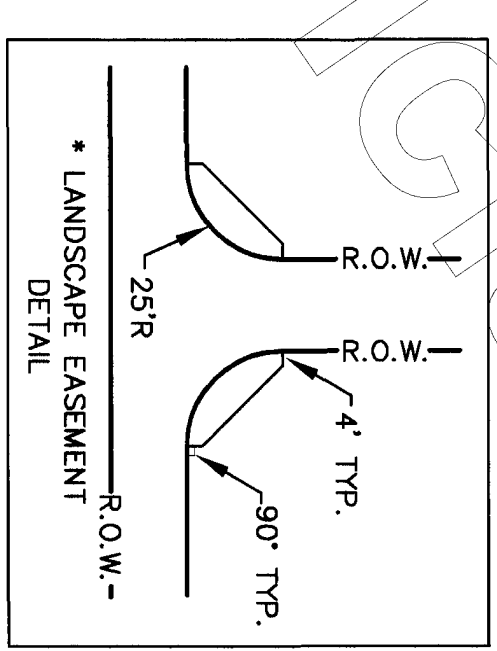
44/77



CURVE	LENGTH	RADIUS	TANGENT	DELTA
C500	44.60	450.00	22.32	5.4042°
C501	265.85	450.00	136.93	33.5056°
C502	207.00	450.00	105.37	26.2112°
C503	217.62	300.00	113.84	41.3342°
C504	167.07	300.00	85.76	31.5429°
C505	202.95	450.00	103.23	25.5027°
C532	92.28	484.00	46.28	10.5528°
C533	103.02	484.00	51.71	12.1145°
C534	104.91	484.00	52.66	12.2509°
C535	81.39	484.00	40.79	9.3806°
C536	104.70	484.00	52.55	12.2339°
C537	25.73	484.00	12.87	3.0246°
C538	76.90	266.00	38.72	16.3352°
C539	163.65	266.00	84.51	35.1459°
C540	100.54	266.00	50.88	21.3920°
C541	133.54	484.00	7.77	1.5022°
C542	87.05	484.00	43.64	10.1817°
C543	65.64	484.00	32.87	7.4614°
C544	37.80	25.00	23.57	86.3716°
C593	137.29	416.00	69.27	18.5431°
C594	29.31	416.00	14.66	4.0212°
C595	140.06	336.00	71.06	23.5258°
C611	38.79	175.00	19.47	12.4155°
C612	35.60	25.00	21.75	82.0236°
C613	80.91	334.00	45.74	15.3545°
C614	104.64	334.00	52.75	17.5704°
C615	9.72	416.00	4.86	1.2021°
C616	128.30	416.00	64.66	17.4013°
C617	42.48	25.00	28.43	97.2049°
C618	134.66	175.00	70.86	44.0515°
C619	21.03	25.00	11.18	4.81123°
C620	68.47	50.00	40.83	78.2751°
C627	62.19	225.00	31.30	15.5013°
C628	42.52	25.00	28.48	97.2653°
C629	189.23	416.00	96.29	28.0353°
C680	15.12	484.00	7.56	1.4725°
C681	67.52	484.00	33.82	7.5935°
C682	9.49	484.00	4.75	1.0725°

LINE	LENGTH	BEARING
L8	46.66	S82°45'13"W
L10	70.35	S25°47'09"W

LINE	LENGTH	BEARING
L500	25.69	N54°49'22"E
L501	59.02	N40°54'48"E
L502	102.86	N27°36'01"E
L503	120.99	N23°16'02"E
L504	105.01	N01°36'16"E
L505	91.71	N27°31'19"E
L506	88.10	N83°37'48"E
L507	52.88	N65°04'12"E
L508	64.01	N54°12'32"E
L509	82.85	N30°20'15"E
L510	98.67	N18°10'27"E
L511	119.74	N10°31'13"W
L512	7.39	N17°54'24"W
L513	30.94	S60°15'38"E
L514	35.29	S63°10'51"E
L515	22.83	S28°51'12"E
L516	73.63	S41°06'40"E
L517	34.14	S04°47'05"E
L518	52.26	S35°13'54"W
L519	16.90	S50°29'32"W



No. 3448483  
 FILED AND RECORDED AT REQUEST OF  
 CHESTER TITKOWSKI, CO.  
 APRIL 18, 2002  
 AT 11:26 AM  
 BY TERRY MAESTRIS, CLERK  
 REC'D IN THE COUNTY CLERK'S OFFICE  
 PHOENIX, ARIZONA  
 PH. (602) 264-3335

REGISTERED PROFESSIONAL ENGINEER  
 ARIZONA  
 No. 11279  
 FLEET • FISHER  
 ENGINEERING INC.  
 4290 EAST CAMERON RD., SUITE 410K  
 PHOENIX, ARIZONA 85018  
 PH. (602) 264-3335

AREA 21.51 ACRES  
 DATE 3/18/2002  
 JOB NO. 53-019  
 SHEET 2 OF 4

44178

# FIRECLIFF UNIT I

**LINE TABLE**

LINE	LENGTH	BEARING
L1	41.56	S86°06'05"E
L2	31.06	S86°06'05"E
L3	24.37	S92°22'59"W
L4	64.77	S97°58'48"W
L5	69.63	S84°23'41"E
L6	69.58	S59°36'11"E
L7	17.68	S24°42'13"W
L8	11.37	S72°36'26"E
L9	25.85	S80°14'53"E
L10	26.80	N12°43'04"E
L11	40.17	N83°22'42"W
L12	36.19	N83°22'42"W
L13	9.44	S10°20'21"W
L14	13.71	S10°20'21"W
L15	20.94	S00°09'52"W
L16	8.41	N89°50'08"W
L17	20.94	N89°50'08"W
L18	8.41	N89°50'08"W

**CURVE TABLE**

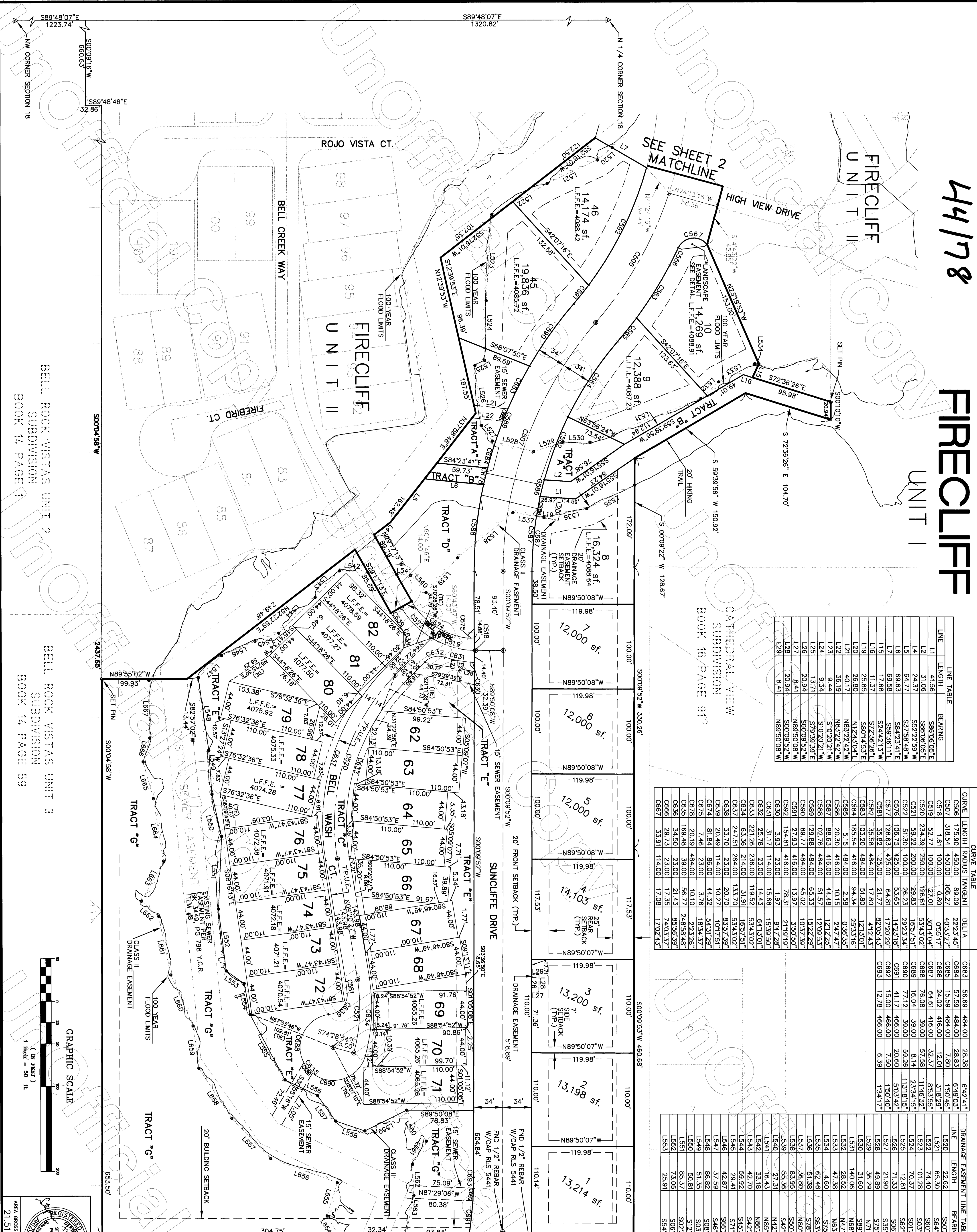
CURVE	LENGTH	RADIUS	TANGENT	DELTA
C506	175.90	450.00	89.09	222°32'45"
C507	318.54	450.00	166.27	40°33'27"
C518	1.61	100.00	0.80	0°55'17"
C519	52.77	100.00	27.01	50°14'04"
C520	234.39	200.00	126.61	53°43'07"
C521	59.22	200.00	29.83	16°51'51"
C522	51.30	100.00	26.23	29°23'34"
C526	106.73	425.00	53.65	14°23'14"
C527	128.63	425.00	64.81	17°20'29"
C581	35.82	25.00	21.77	82°05'43"
C582	35.58	484.00	17.80	41°2'43"
C583	103.20	484.00	51.80	121°31'06"
C584	185.54	416.00	94.34	25°33'16"
C585	3.15	484.00	2.38	0°36'35"
C586	20.30	416.00	10.15	24°47'47"
C587	88.63	416.00	44.48	12°12'25"
C588	102.76	484.00	51.57	12°09'53"
C589	129.88	484.00	65.33	15°22'29"
C590	89.77	484.00	45.02	10°37'39"
C591	27.93	416.00	13.97	3°50'50"
C592	154.81	416.00	78.31	21°19'19"
C630	3.93	23.00	1.97	94°2'26"
C631	31.17	114.00	15.68	19°39'50"
C632	25.78	236.00	14.43	64°13'01"
C633	221.26	236.00	119.52	53°43'02"
C634	63.36	214.00	31.91	16°57'51"
C637	247.51	264.00	133.70	53°43'02"
C638	33.70	23.00	20.70	83°57'39"
C639	20.49	114.00	10.27	10°17'51"
C674	81.84	88.00	44.32	54°31'29"
C675	7.46	23.00	3.76	18°34'37"
C678	20.19	484.00	10.10	2°23'26"
C683	169.48	39.00	86.71	248°58'48"
C684	34.50	23.00	21.43	85°58'39"
C686	29.73	23.00	17.35	74°03'37"
C687	33.91	114.00	17.08	17°02'43"

**DRAINAGE EASEMENT LINE TABLE**

LINE	LENGTH	BEARING
L1920	22.62	S50°29'52"W
L1921	65.30	S64°46'21"W
L1922	74.40	S60°47'17"W
L1923	101.28	S03°41'56"W
L1924	70.37	S01°38'33"W
L1925	36.15	S21°13'57"E
L1926	12.81	S62°45'14"E
L1927	71.33	S06°20'14"E
L1928	21.90	S35°00'55"E
L1929	49.88	S79°34'33"E
L1930	36.29	N1°19'31"E
L1931	31.80	S89°23'07"E
L1932	76.93	N15°19'32"W
L1933	140.06	N68°28'05"E
L1934	28.52	N4°20'23"E
L1935	65.69	N3°49'15"W
L1936	47.36	N63°14'9"E
L1937	5711.3222'	S71°13'22"W
L1938	29.41	S43°35'45"W
L1939	59.92	S66°26'42"W
L1940	42.87	S46°56'13"W
L1941	37.59	S08°31'36"E
L1942	86.92	S08°31'36"E
L1943	51.35	S03°59'21"E
L1944	50.81	S12°43'29"E
L1945	85.37	S02°36'54"W
L1946	73.05	S06°57'37"E
L1947	25.91	S54°39'46"E

**DRAINAGE EASEMENT LINE TABLE**

LINE	LENGTH	BEARING
L554	37.16	S11°00'18"E
L555	86.74	S27°51'30"E
L556	42.48	S64°07'37"E
L557	36.61	S35°23'03"E
L558	36.15	S71°13'57"E
L559	54.65	N63°46'54"E
L560	43.02	S32°29'15"E
L561	31.56	S30°44'14"W
L562	36.91	S01°57'15"E
L563	47.99	S10°51'32"W
L564	76.93	N15°19'32"W
L565	40.93	N16°55'15"E
L566	82.91	N70°22'56"E
L567	65.69	N43°49'15"W
L568	70.60	N33°10'50"W
L569	50.14	N07°35'28"W
L570	65.38	N2°32'50"W
L571	70.30	N11°38'32"W
L572	28.83	N48°18'11"W
L573	28.83	N08°56'06"W
L574	53.63	N29°55'43"E
L575	74.36	N08°56'06"W
L576	44.75	N15°44'38"W
L577	29.11	N15°38'15"E
L578	67.51	N00°34'05"W



**FINAL PLAT FIRECLIFF**

FLEET • FISHER ENGINEERING INC.  
 4250 EAST CAMERON RD., SUITE 410K  
 PHOENIX, ARIZONA 85018 Ph. (602) 264-3335

DATE: 3/18/2002  
 JOB NO.: 53-019  
 SHEET: 3 OF 4

**GRAPHIC SCALE**  
 (IN FEET)  
 1 inch = 60 ft.

**BELL ROCK VISTAS UNIT 2**  
 SUBDIVISION  
 BOOK 14 PAGE 1

**BELL ROCK VISTAS UNIT 3**  
 SUBDIVISION  
 BOOK 14 PAGE 59

**BELL ROCK VISTAS UNIT 2**  
 SUBDIVISION  
 BOOK 14 PAGE 1

**BELL ROCK VISTAS UNIT 3**  
 SUBDIVISION  
 BOOK 14 PAGE 59

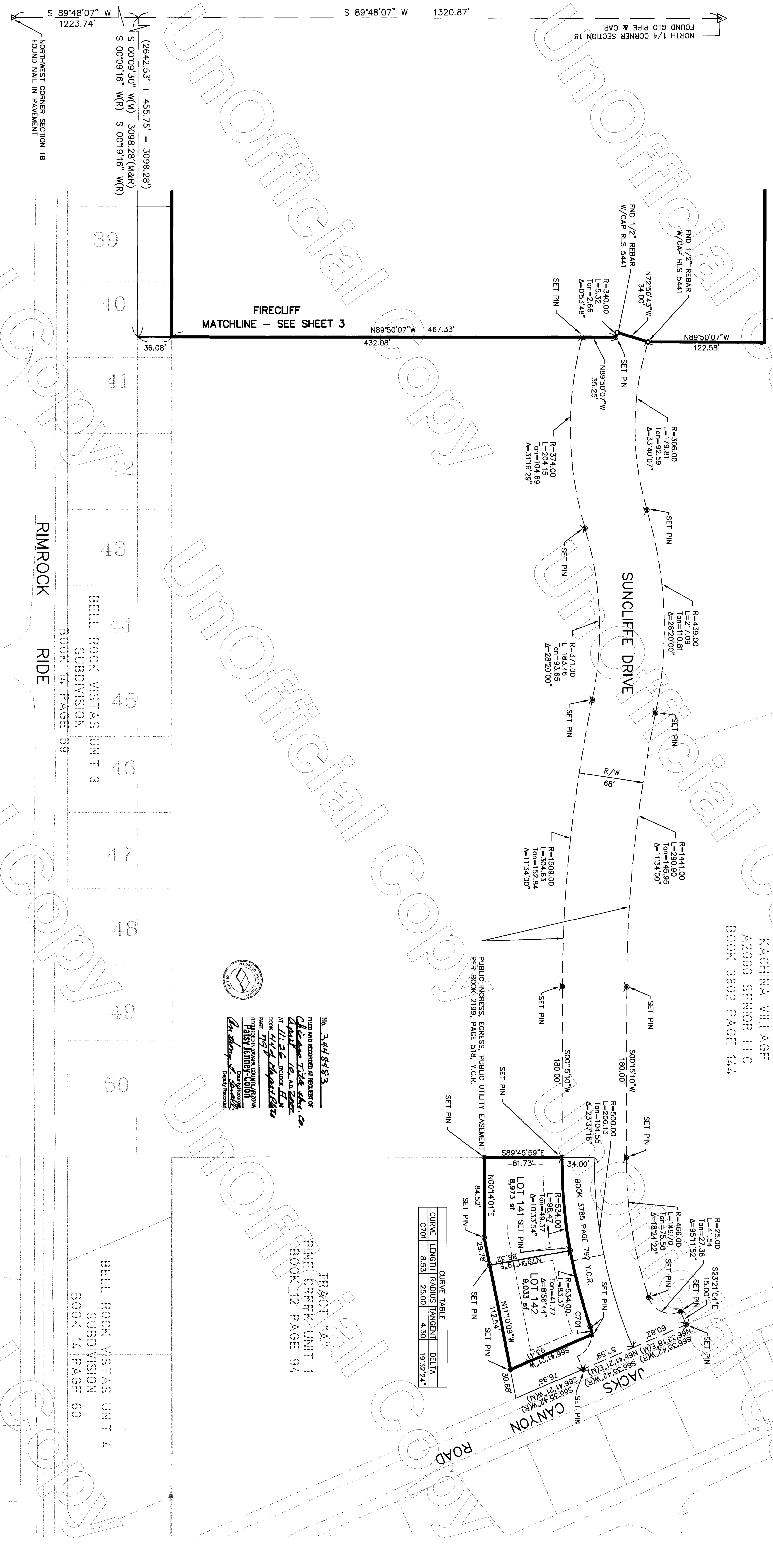
# FIRECLIFF

UNIT 1

CATHEDRAL VIEW  
SUBDIVISION  
BOOK 16 PAGE 91

KACHINA VILLAGE  
A2000 SENIOR LLC  
BOOK 3802 PAGE 144

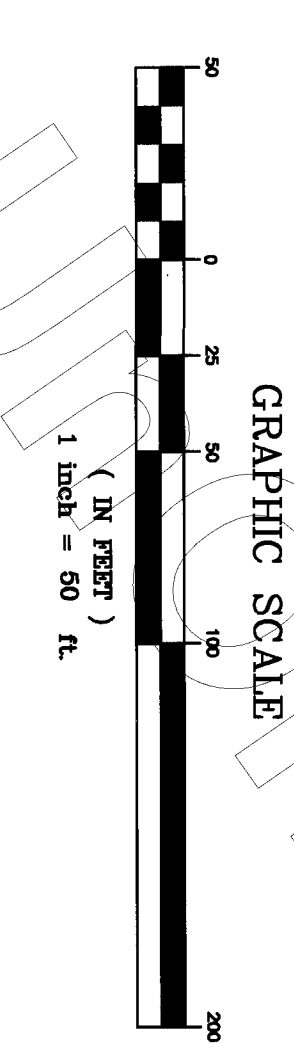
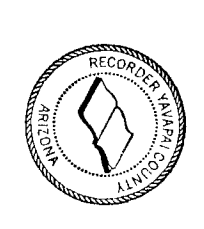
44/79



CURVE TABLE

CURVE	LENGTH	RADIUS	TANGENT	DELTA
C701	8.53	25.00	4.30	19.3224°

No. 3448483  
FILED AND RECORDED AT REQUEST OF  
*Charles T. Fisher, Inc.*  
AT THE OFFICE OF THE  
CLERK OF THE SUPERIOR COURT  
IN MARICOPA COUNTY, ARIZONA  
ON 11/16/2002  
PAGE 179 OF 179  
*Charles T. Fisher, Inc.*  
Surveyors  
Grand Prerequisite



REGISTERED PROFESSIONAL ENGINEER  
No. 12345  
STATE OF ARIZONA

FINAL PLAT  
FIRECLIFF  
FLEET • FISHER  
ENGINEERING INC.  
4250 EAST CAMERBACK RD., SUITE 410K  
PHOENIX, ARIZONA 85018 PH. (602) 264-3335

DATE: 2/11/2002  
JOB NO.: 53-019  
SHEET: 4 OF 4

AREA GROSS: 21.51 ACRES