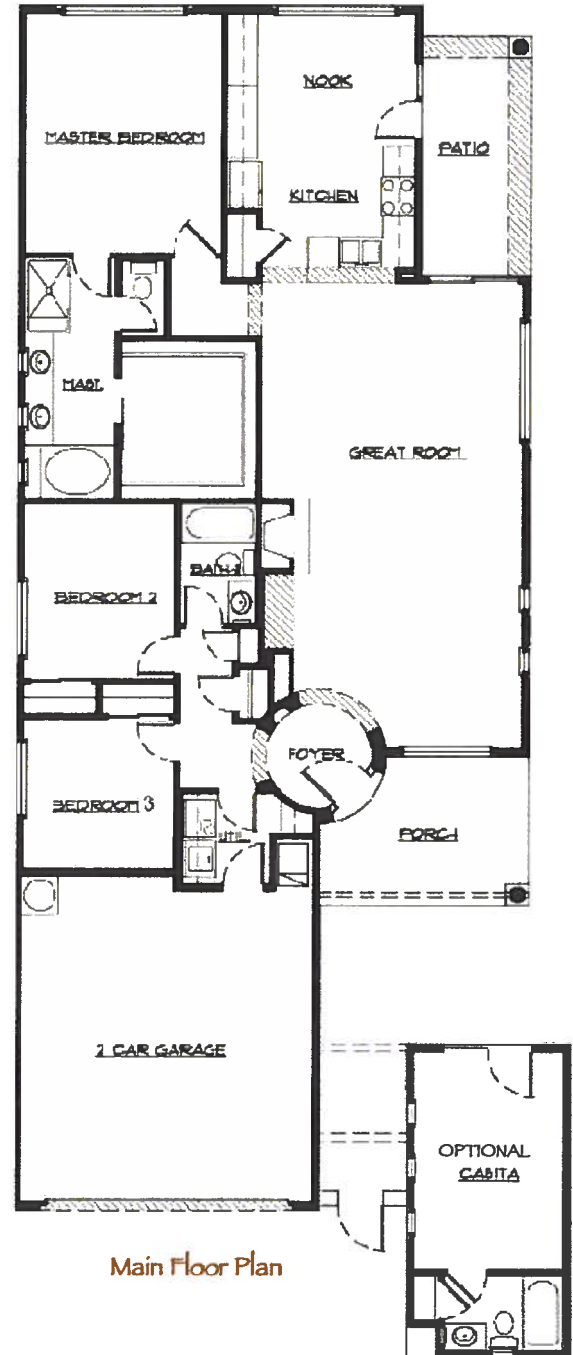
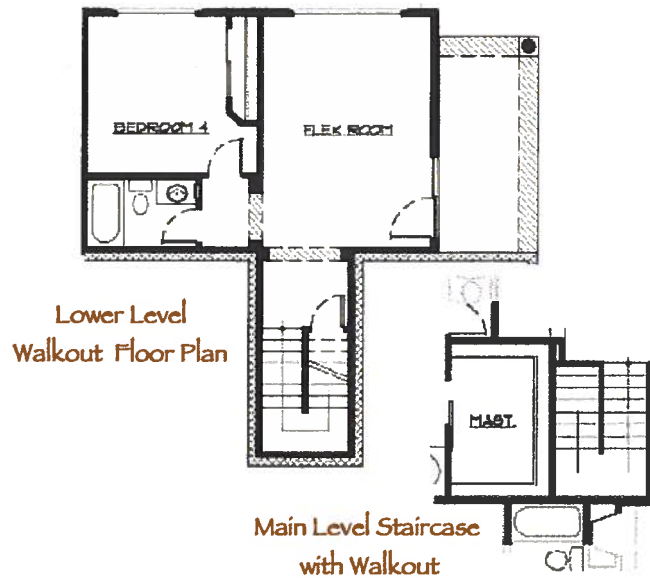


Plan 1750 The Kachina



The Kachina has 1750 square feet of luxurious living area on the main level, a very large Great Room, two private bedrooms in the front of the home, a Kitchen and Breakfast Nook on the back of the home and a dramatic Master Bedroom Suite.

Off the Great Room one can walk onto a covered patio which also has access to the Kitchen and Breakfast Nook, making it a great place to grill.

A 227 square foot "Casita" can be built as a private guest house, study or office to the front of the home, adjacent to the garage creating a breezeway affect between the Casita and main house.

If this home is built on a walk-out homesite it will also have 563 square feet of additional living area. A roomy "Flex Room," full bath, 4th bedroom, and another outdoor patio. Please note the changes in the main floor plan to create stairs to this lower level.

The Kachina: a family home and a vacation home - an enchanting livable home design perfect for your Sedona lifestyle..

Represented
Exclusively by



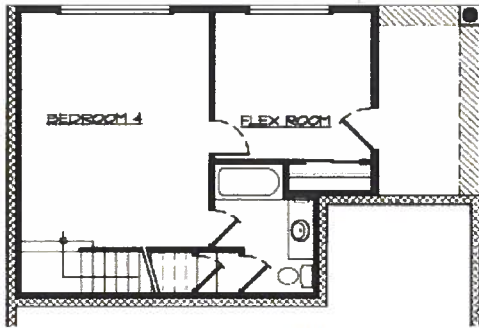
Optional
Casita Floor plan



Plan 1914

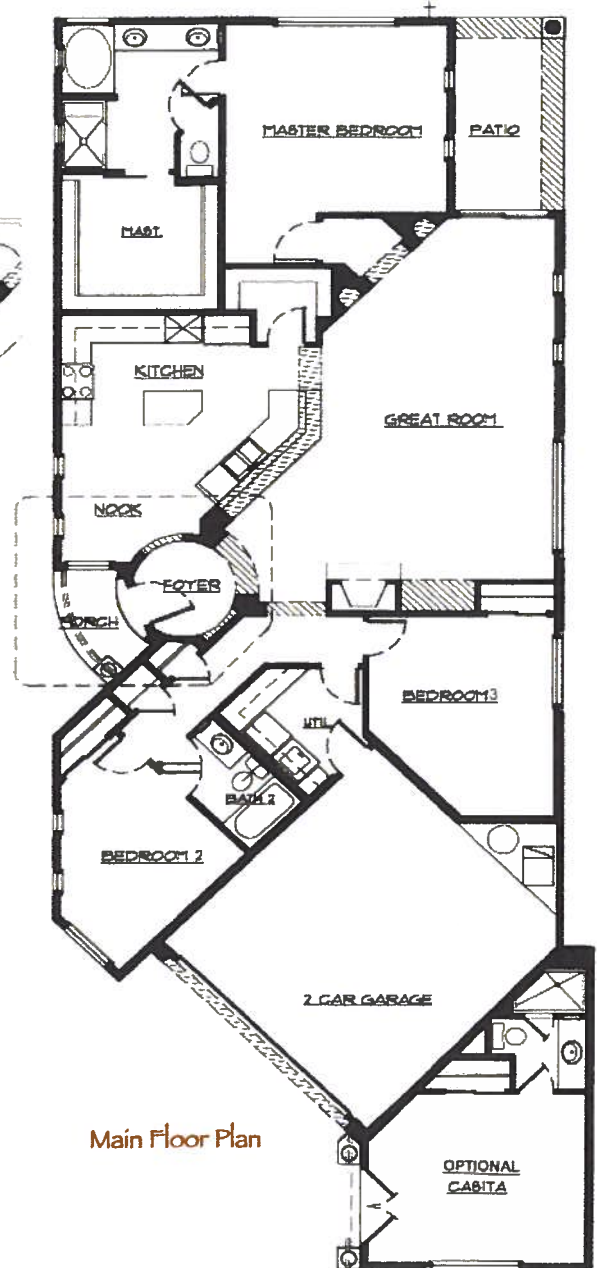
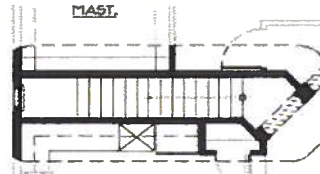
The Boynton

Villas at
Firecliff



Lower Level Walkout Floor plan

Main Level Staircase
with Walkout



Main Floor Plan

Optional
Casita Floor plan

The Boynton has 1914 square feet of living area, a spacious Master Suite, a gourmet cook's kitchen, a private Guest Bedroom with direct bath access, a third Bedroom or Study, and a truly "great" Great Room with a fireplace.

One enters this fine home through a circular foyer reminiscent of classic mansions of the past. This home is perfect for a year-around home in Sedona or a vacation retreat. The two car garage will "park" your vehicles off the street and driveway or provide extra storage for life's accumulations.

Off the Great Room one can walk onto a covered patio, a special place to relax and enjoy the wonderful weather of Sedona and Northern Arizona.

A 225 square foot "Casita" can be built as a private guest house, study or office to the front of the home, adjacent to the garage.

If this home is built on a walk-out homesite it will have 564 square feet of additional living area. A roomy "Flex Room," full bath, 4th bedroom, and another outdoor patio. Please note the changes in the main floor plan to create stairs to this lower level.

The Boynton - a perfect home for a perfect lifestyle.

Represented
Exclusively by



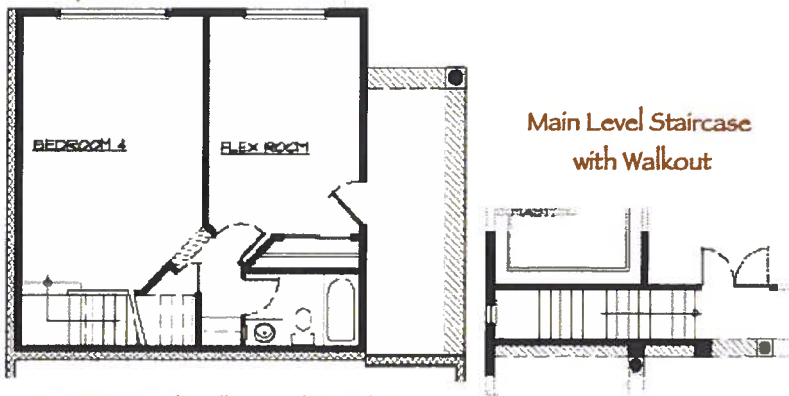
Villas at Firecliff On Site Sales • (928) 284-2525 / Remax Sedona Main Office • 1225 W. Hwy 89A • Sedona, AZ 86336 • (928) 282-4166



Plan 2250

The Anasazi

Villas at
Firecliff



Lower Level Walkout Floor Plan

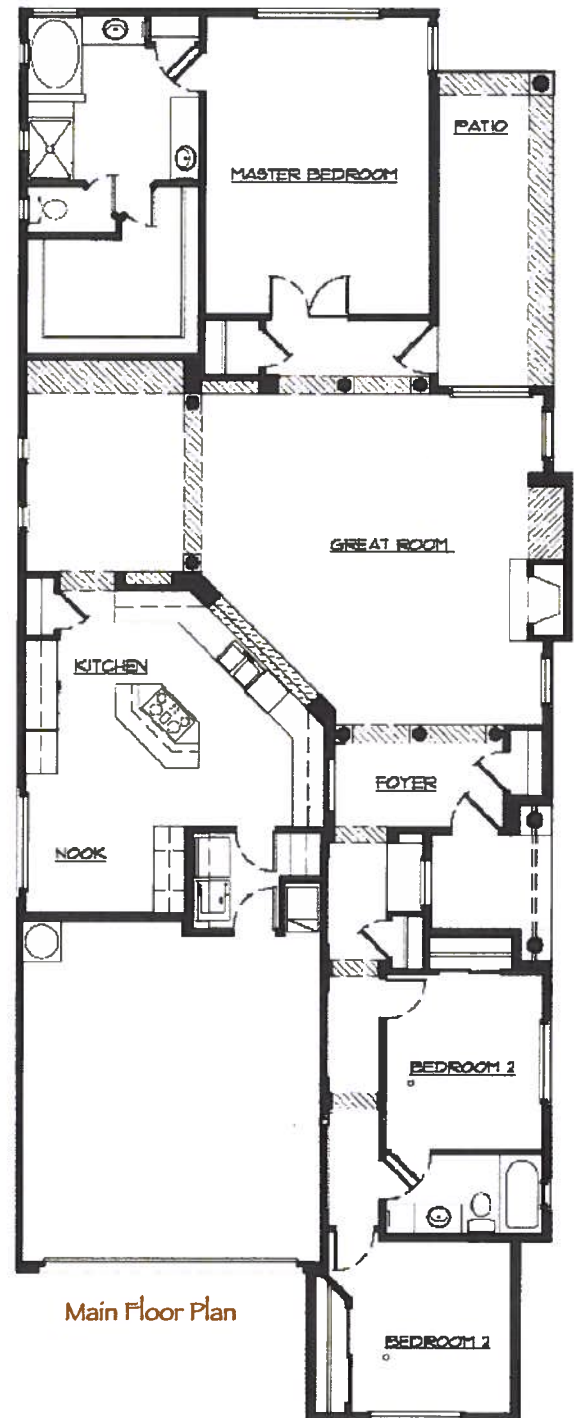
The Anasazi has 2250 square feet of living area on the main floor, a spacious and dramatic Great Room, a separate Dining Room, a Kitchen with a cooking island and Breakfast Nook, two bedrooms to the front of the home, and a luxurious Master Bedroom Suite.

The Anasazi takes advantage of the ten foot ceilings of the Villas at Firecliff, creating an interior ambience of a large, custom home.

The Master Bath features his and her vanities, a room-size walk-in closet, and a large jetted soaking tub with windows to the outdoors.

If this home is built on a walk-out homesite it will also have 650 square feet of additional living area. A roomy "Flex Room," full bath, 4th bedroom, and another outdoor patio. Please note the changes in the main floor plan to create stairs to this lower level. With this lower level finish, the Anasazi is 2,900 square feet in size.

The Anasazi - Roomy and Gracious - the perfect home for entertaining and a relaxed Sedona lifestyle..



Main Floor Plan

Represented
Exclusively by



Villas at Firecliff On Site Sales • (928) 284-2525 / Remax Sedona Main Office • 1225 W. Hwy 89A • Sedona, AZ 86336 • (928) 282-4166



EQUAL HOUSING
OPPORTUNITY