

Sedona Golf Resort

THE PAYSON

PLAN 115



Elevation A



Elevation B



Elevation



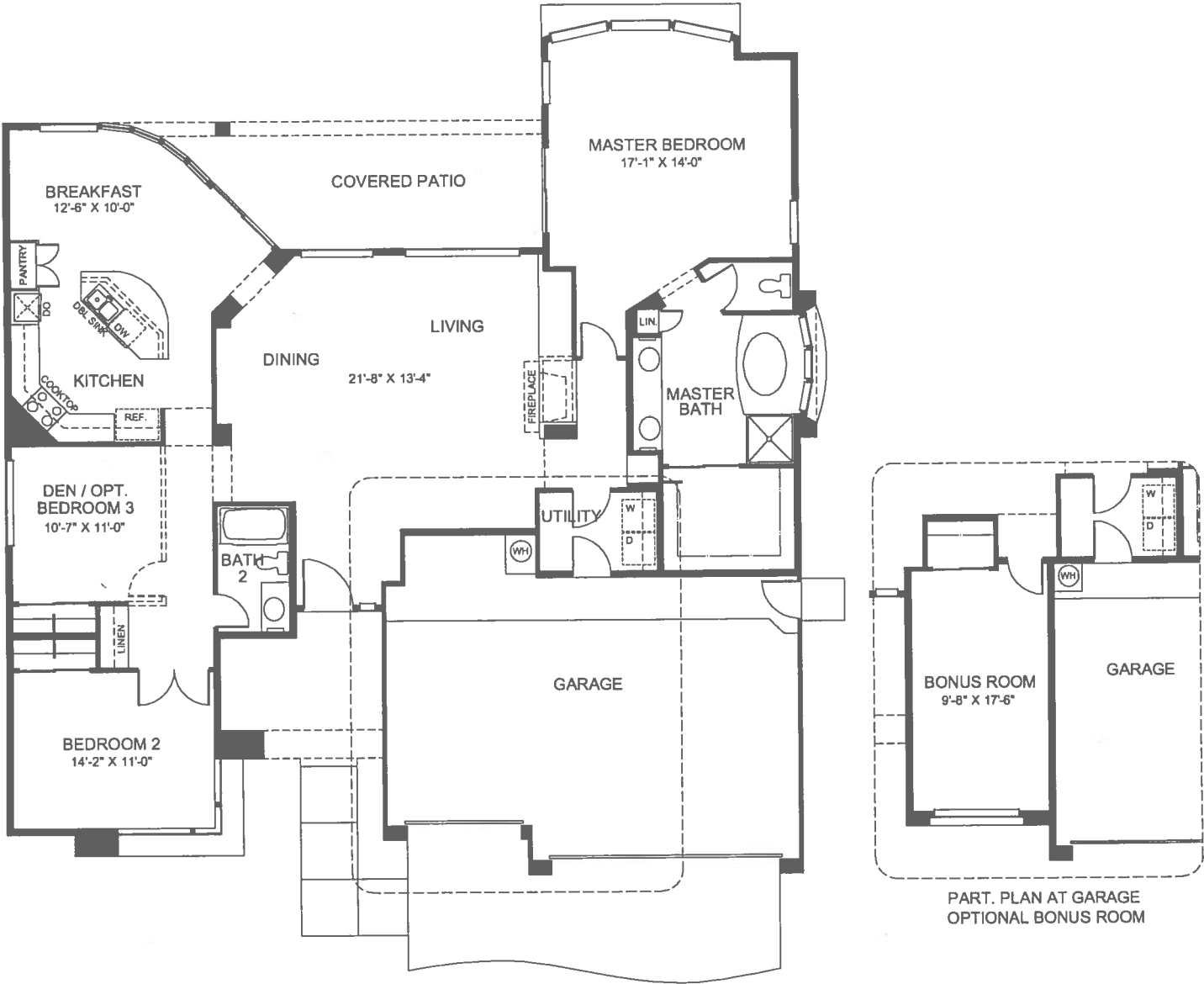
GOLDEN HERITAGE

H O M E S

A SUNCOR COMPANY

THE PAYSON

1,991 SQ. FT.

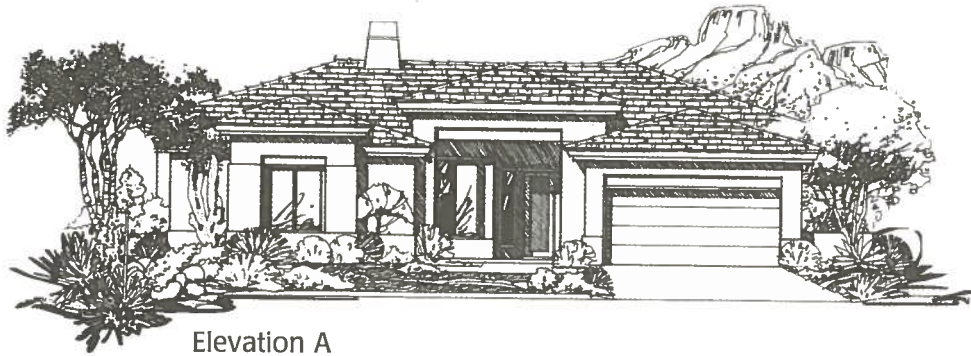


Because we strive to continually improve our homes, we reserve the right to modify the designs, interior and exterior features, and methods and materials of construction without notice or obligation.

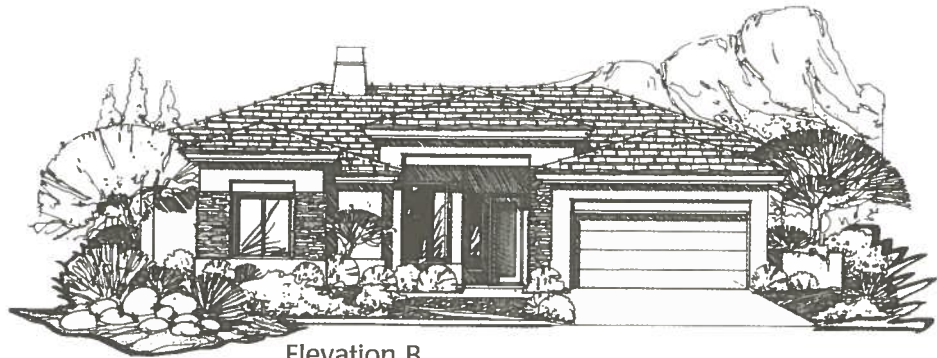
Sedona Golf Resort

THE PINWOOD

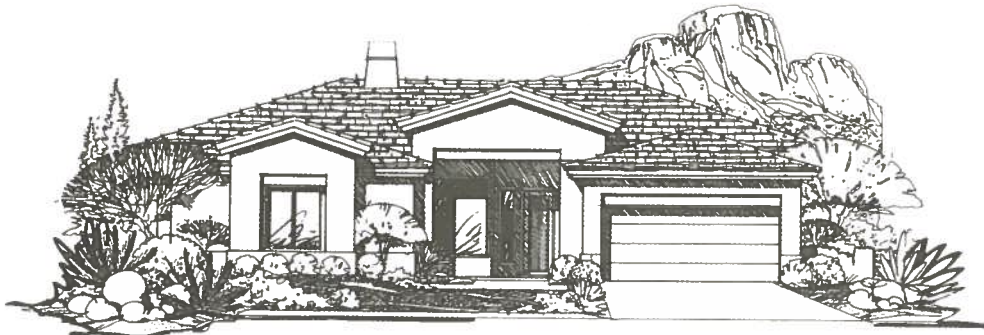
PLAN 125



Elevation A



Elevation B



Elevation C



GOLDEN HERITAGE

H O M E S

A SUNCOR COMPANY

THE PINWOOD

2,196 SQ. FT.



Because we strive to continually improve our homes, we reserve the right to modify the designs, interior and exterior features, and methods and materials of construction without notice or obligation.

Sedona Golf Resort

THE JEROME

PLAN 135



Elevation A



Elevation B



Elevation C



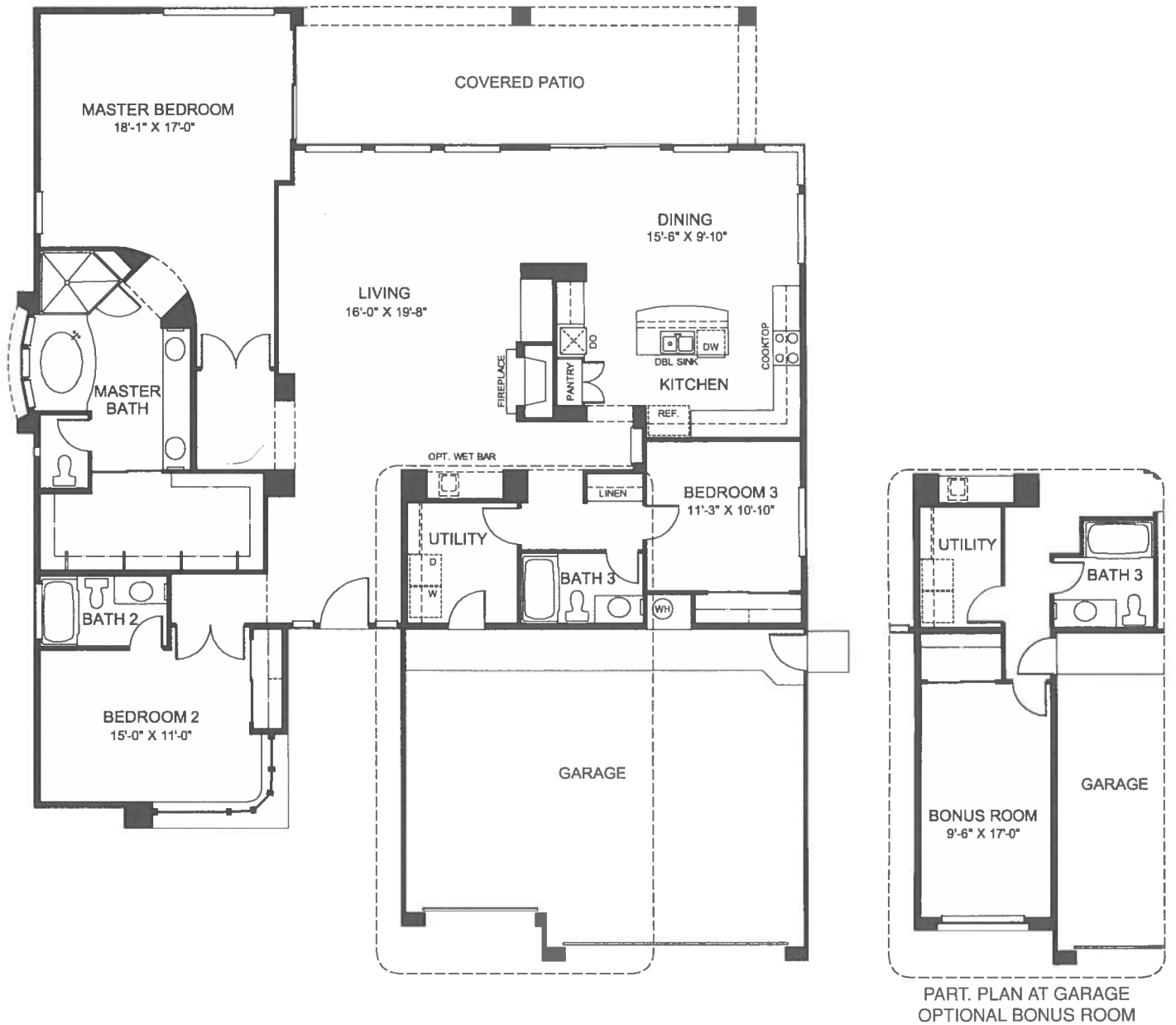
GOLDEN HERITAGE

HOMES

A SUNCOR COMPANY

THE JEROME

2,407 SQ. FT.



Because we strive to continually improve our homes, we reserve the right to modify the designs, interior and exterior features, and methods and materials of construction without notice or obligation.

Sedona Golf Resort

THE PRESCOTT

PLAN 145



Elevation A



Elevation B



Elevation C



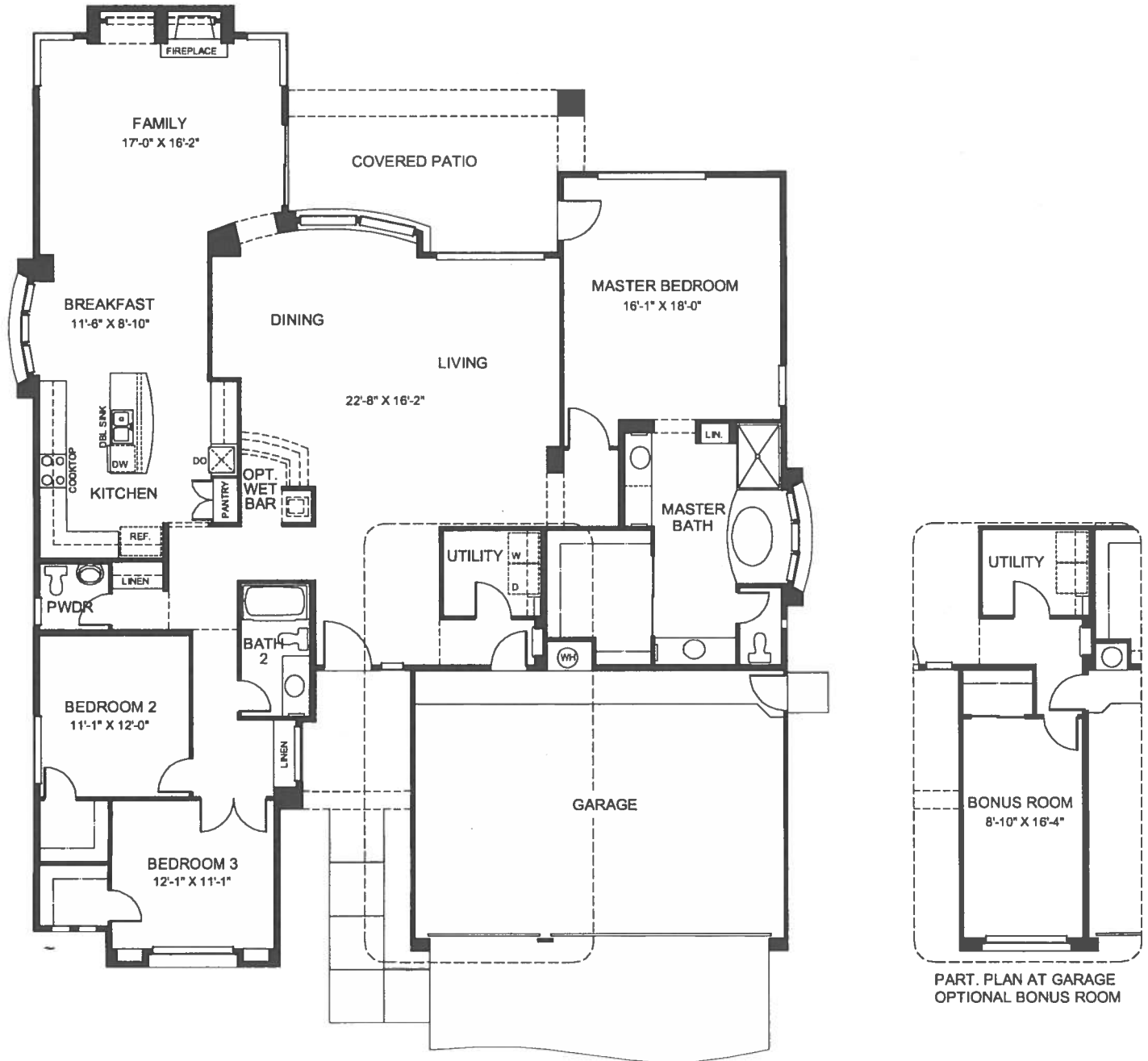
GOLDEN HERITAGE

HOMES

A SUNCOR COMPANY

THE PRESCOTT

2,592 SQ. FT.

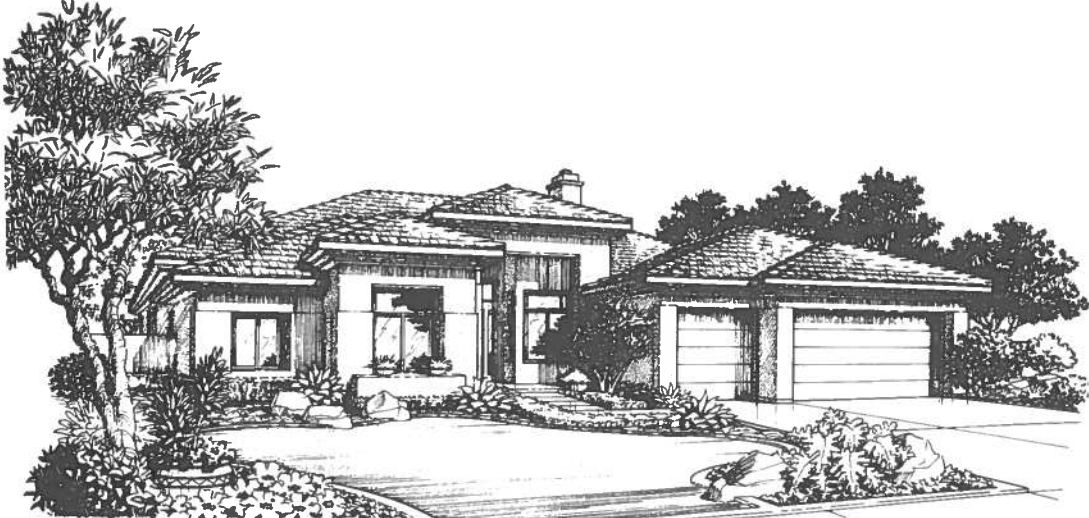


Because we strive to continually improve our homes, we reserve the right to modify the designs, interior and exterior features, and methods and materials of construction without notice or obligation.

Sedona Golf Resort

THE COTTONWOOD

PLAN 155



Elevation A



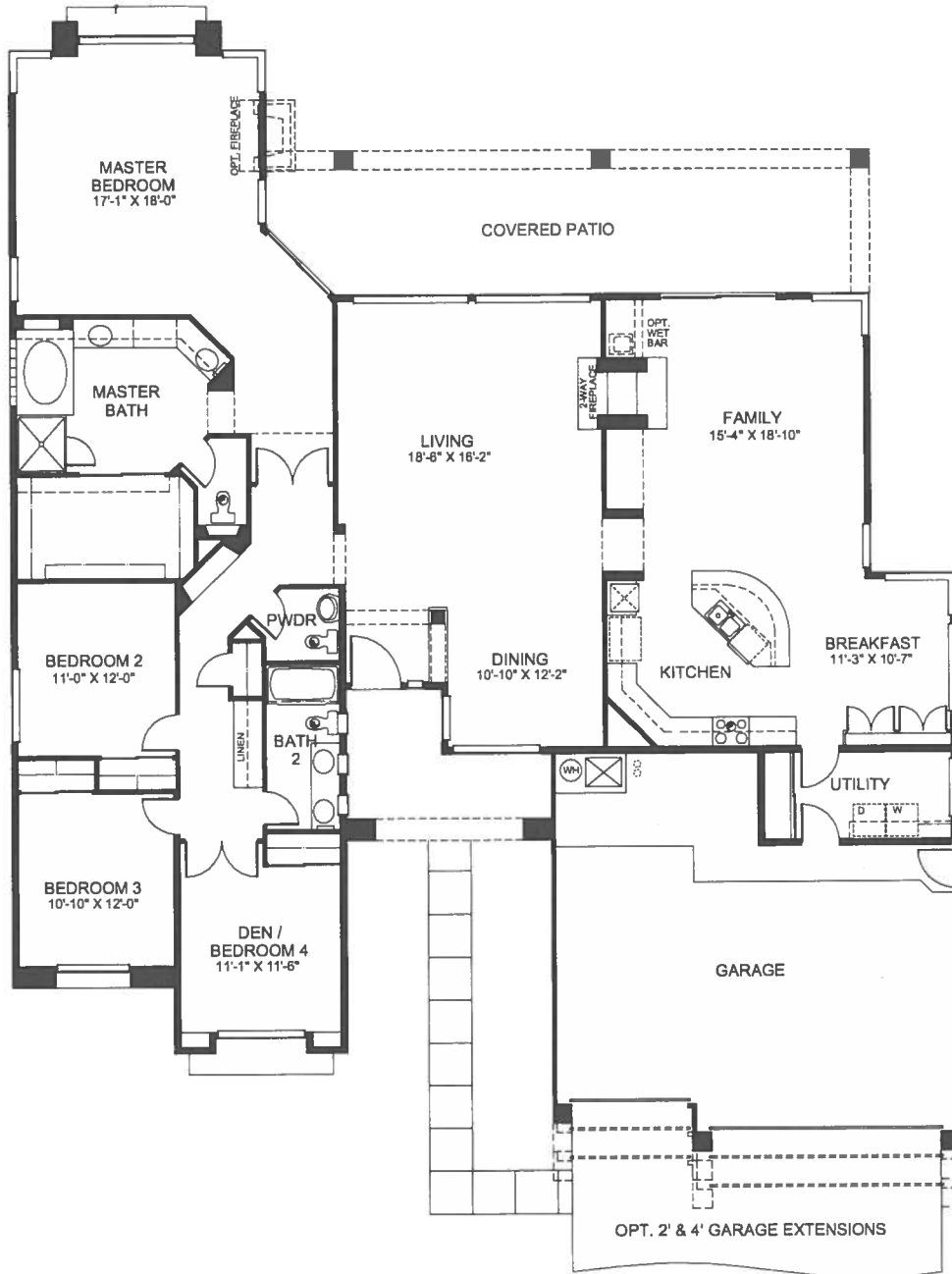
Elevation B



GOLDEN HERITAGE
H O M E S
A SUNCOR COMPANY

THE COTTONWOOD

2,782 SQ. FT.



Because we strive to continually improve our homes, we reserve the right to modify the designs, interior and exterior features, and methods and materials of construction without notice or obligation.

Sedona Golf Resort

THE TUCSON

PLAN 165



Elevation A



Elevation B



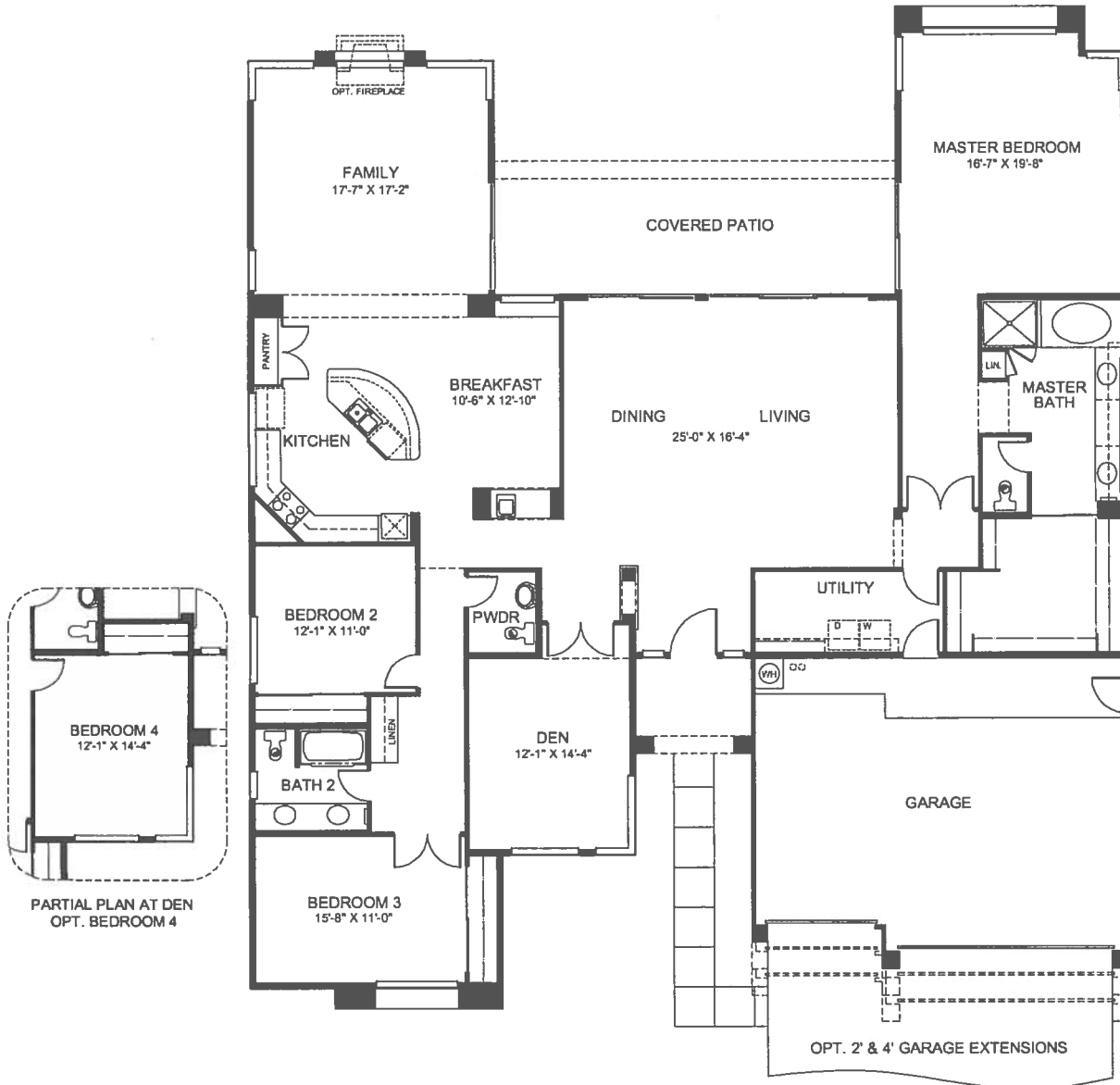
GOLDEN HERITAGE

H O M E S

A SUNCOR COMPANY

THE TUCSON

3,098 SQ. FT.



Because we strive to continually improve our homes, we reserve the right to modify the designs, interior and exterior features, and methods and materials of construction without notice or obligation.

Sedona Golf Resort

THE WICKENBERG

PLAN 175



Elevation A



Elevation B



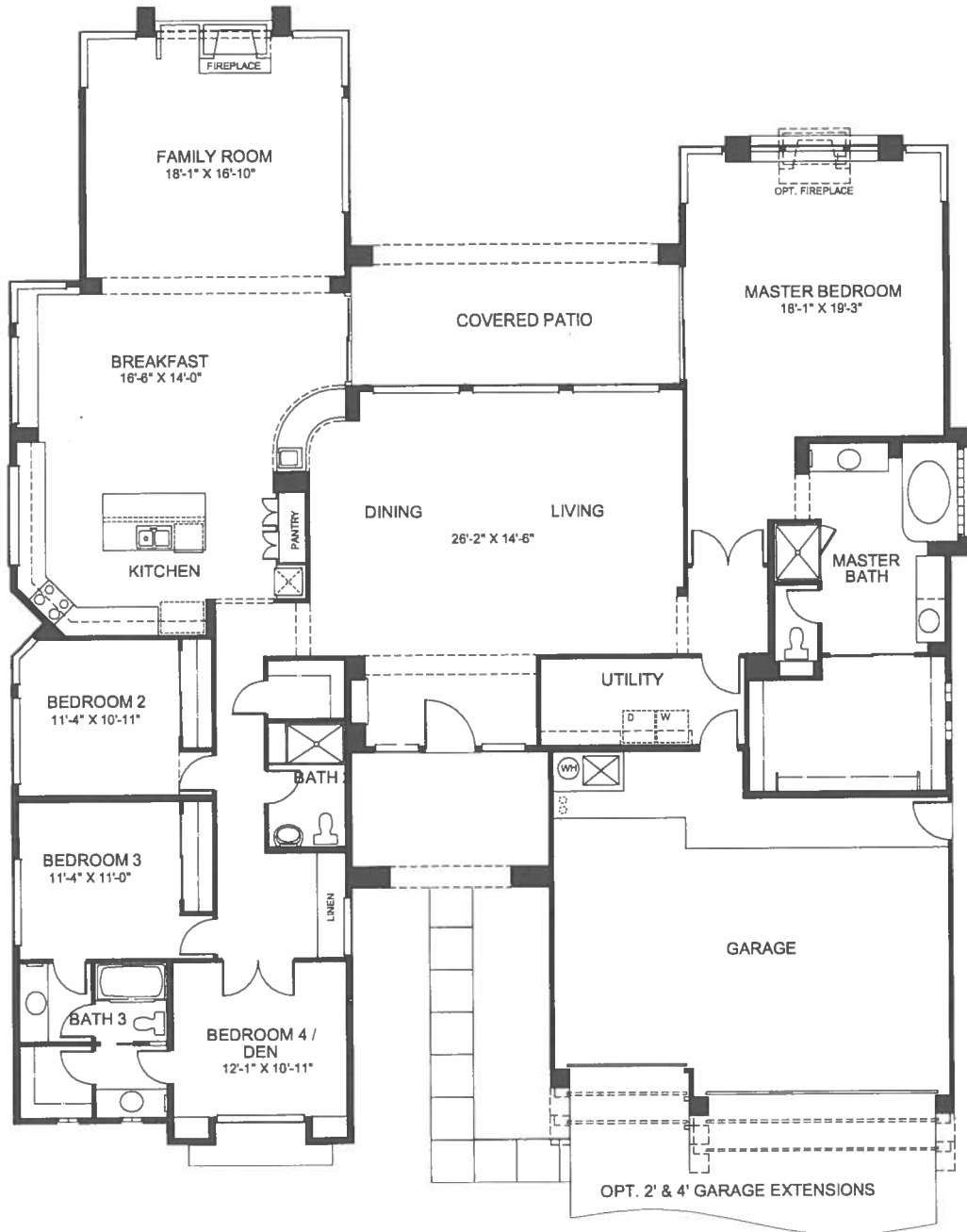
GOLDEN HERITAGE

H O M E S

A SUNCOR COMPANY

THE WICKENBERG

3,195 SQ. FT.



Because we strive to continually improve our homes, we reserve the right to modify the designs, interior and exterior features, and methods and materials of construction without notice or obligation.

Sedona Golf Resort

THE SIERRA

PLAN 905



Elevation A



Elevation B



Elevation C



Elevation D



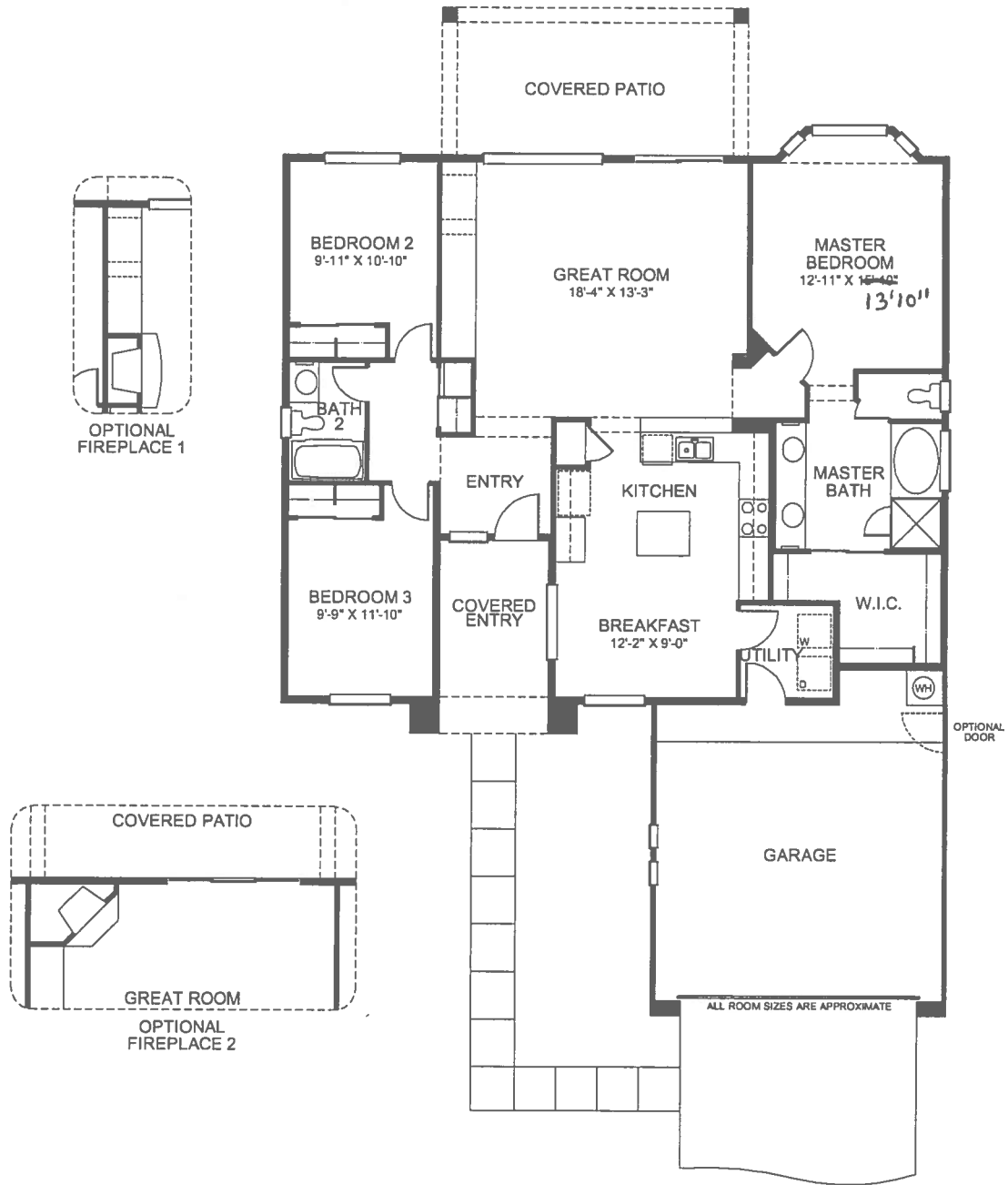
GOLDEN HERITAGE

HOMES

A SUNCOR COMPANY

THE SIERRA

1,583 SQ. FT.



Because we strive to continually improve our homes, we reserve the right to modify the designs, interior and exterior features, and methods and materials of construction without notice or obligation.

Sedona Golf Resort

THE CATALINA

PLAN 910



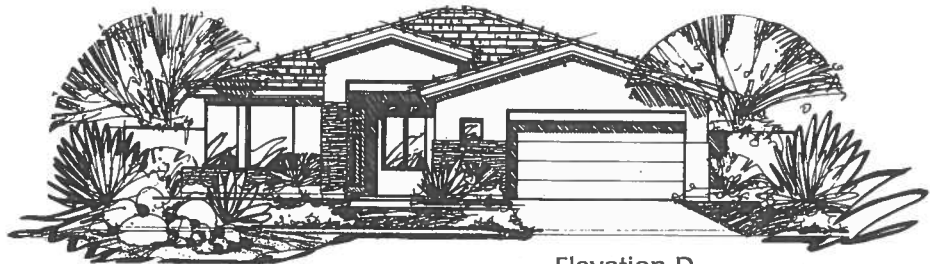
Elevation A



Elevation B



Elevation C



Elevation D



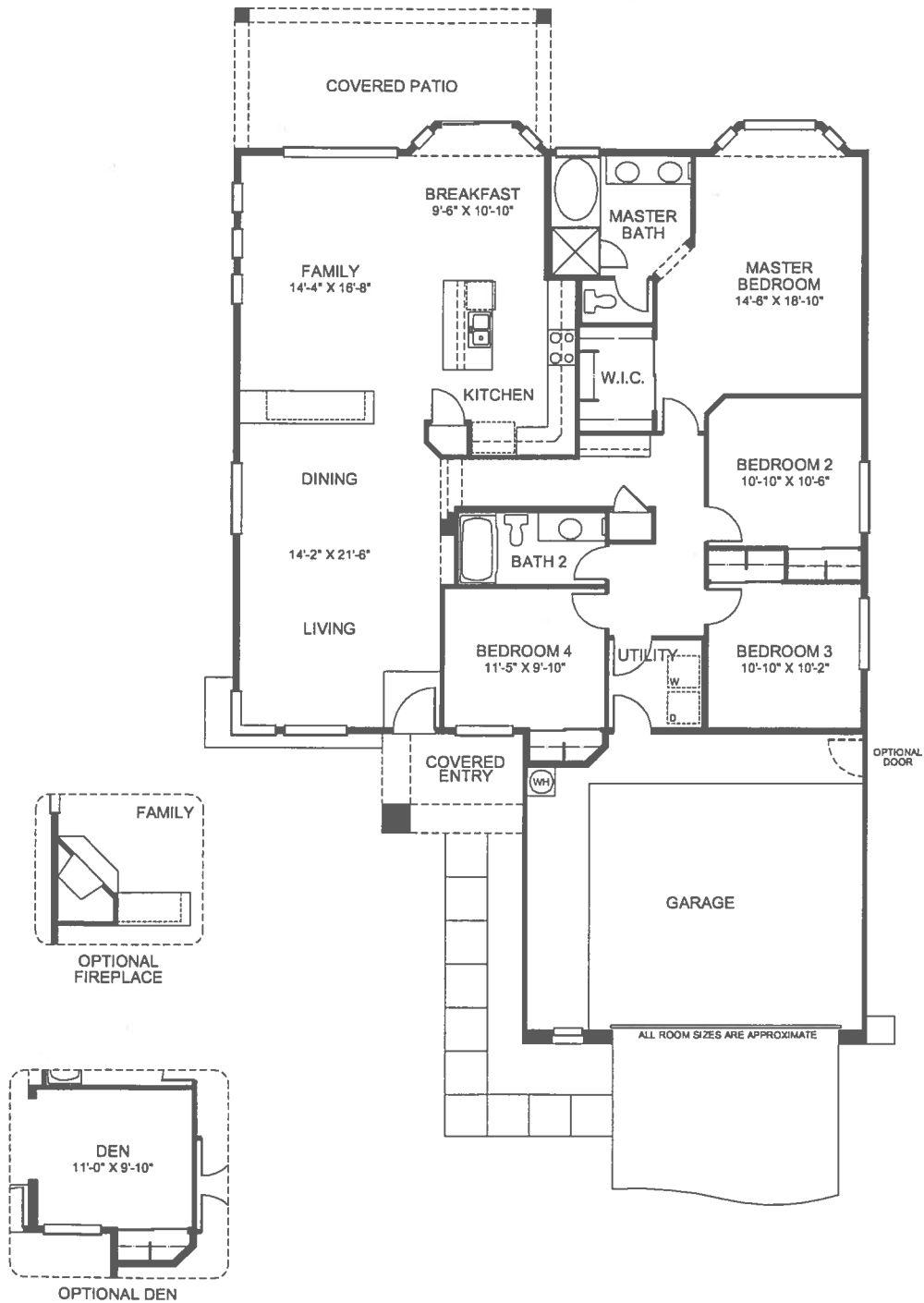
GOLDEN HERITAGE

HOMES

A SUNCOR COMPANY

THE CATALINA

1,912 SQ. FT.

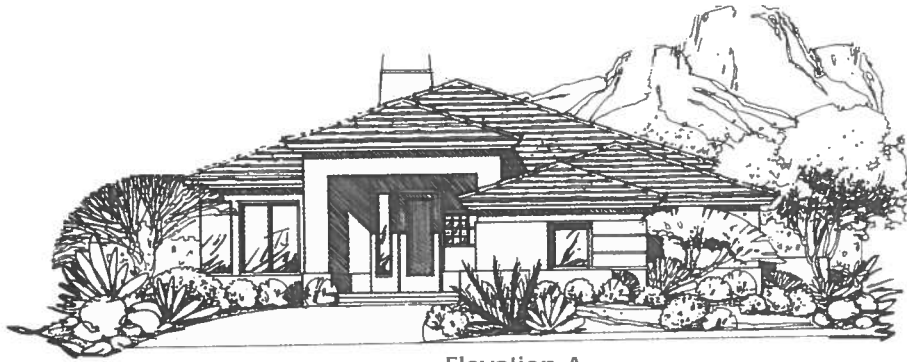


Because we strive to continually improve our homes, we reserve the right to modify the designs, interior and exterior features, and methods and materials of construction without notice or obligation.

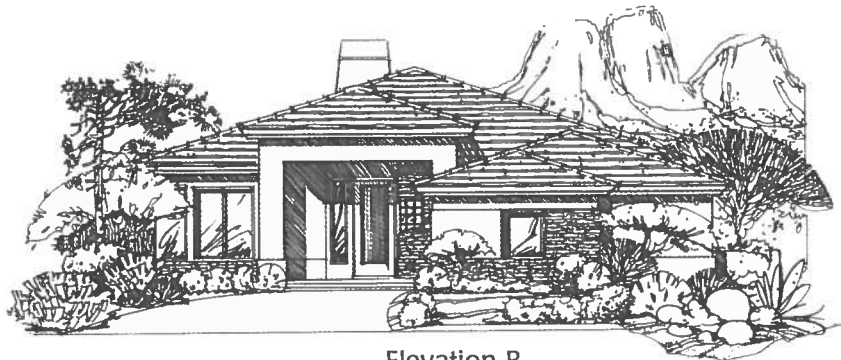
Sedona Golf Resort

THE CAREFREE

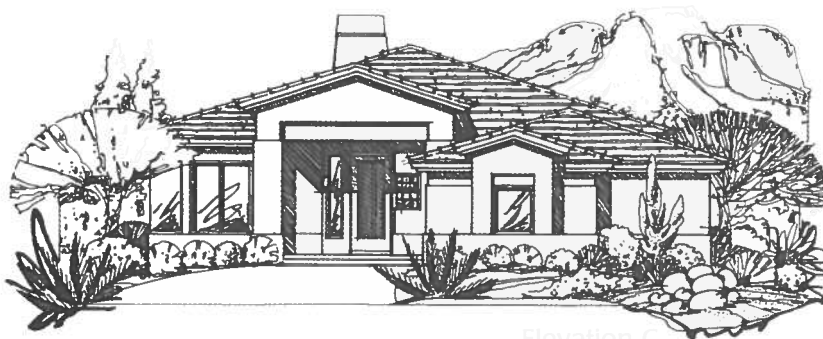
PLAN 915



Elevation A



Elevation B



Elevation C



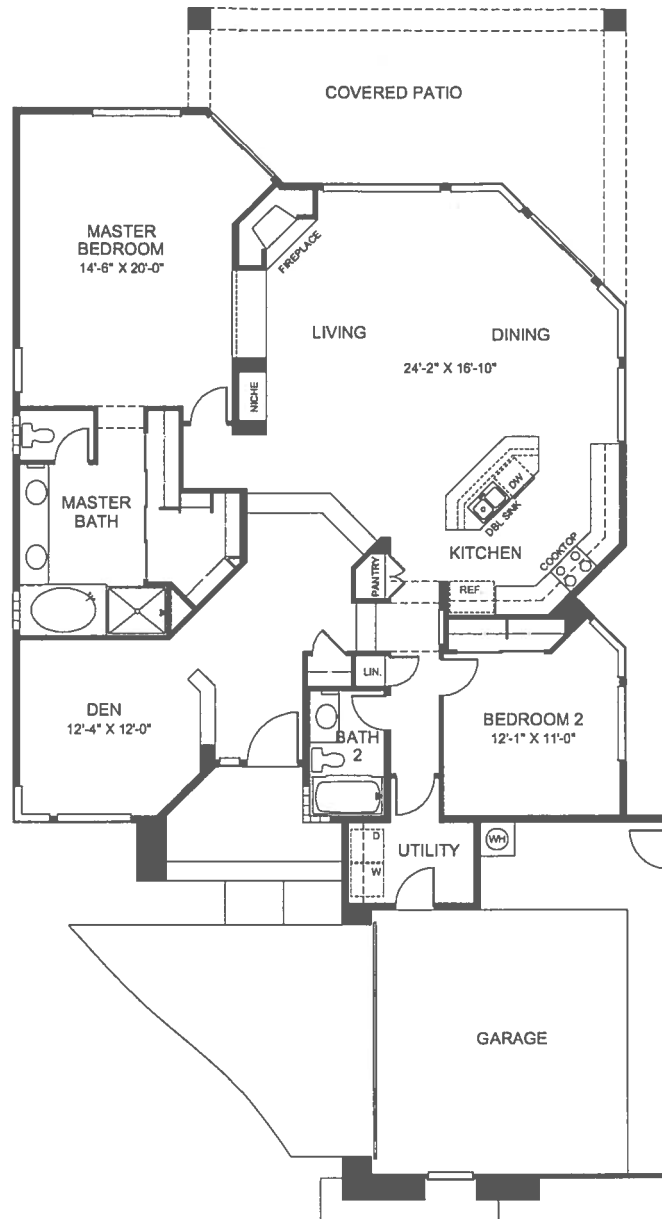
GOLDEN HERITAGE

H O M E S

A SUNCOR COMPANY

THE CAREFREE

1,900 SQ. FT.

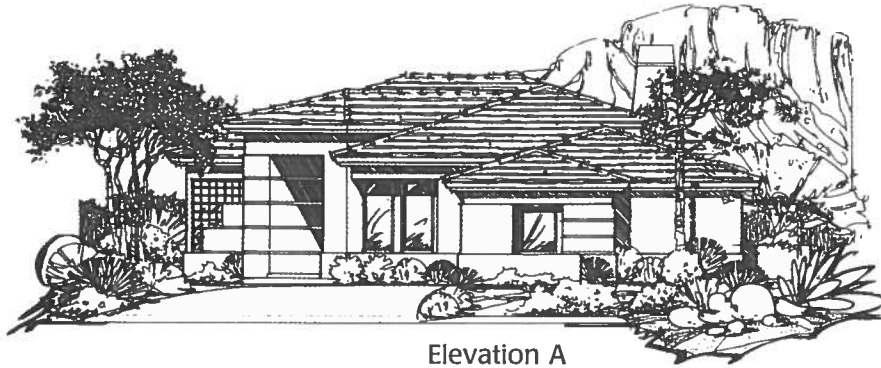


Because we strive to continually improve our homes, we reserve the right to modify the designs, interior and exterior features, and methods and materials of construction without notice or obligation.

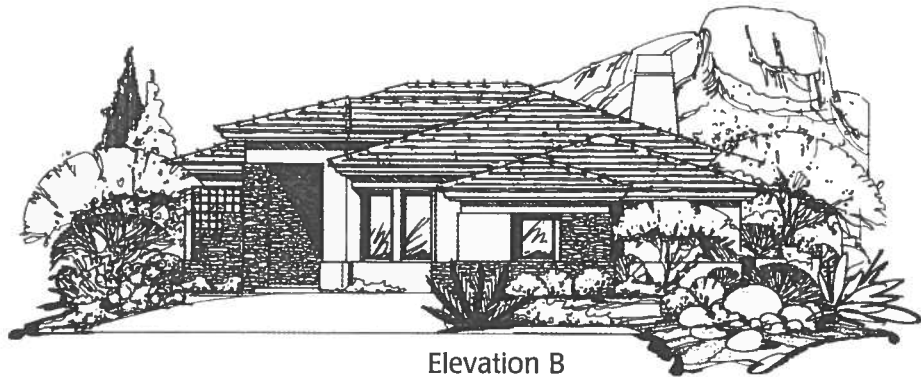
Sedona Golf Resort

THE FLAGSTAFF

PLAN 925



Elevation A



Elevation B



Elevation C



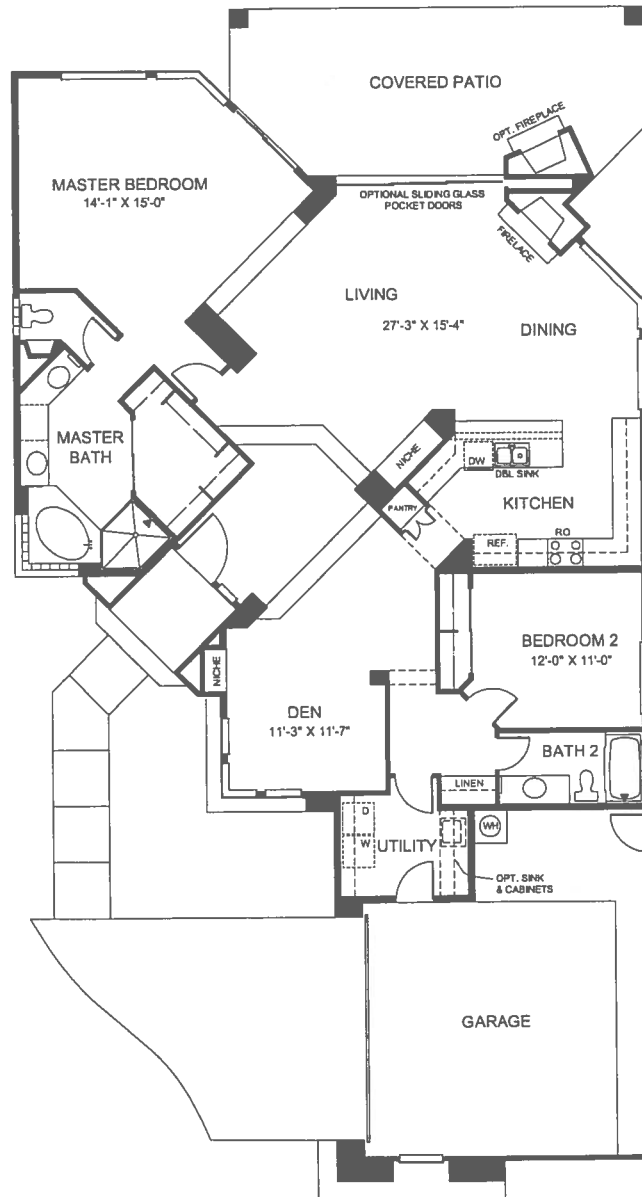
GOLDEN HERITAGE

HOMES

A SUNCOR COMPANY

THE FLAGSTAFF

1,932 SQ. FT.

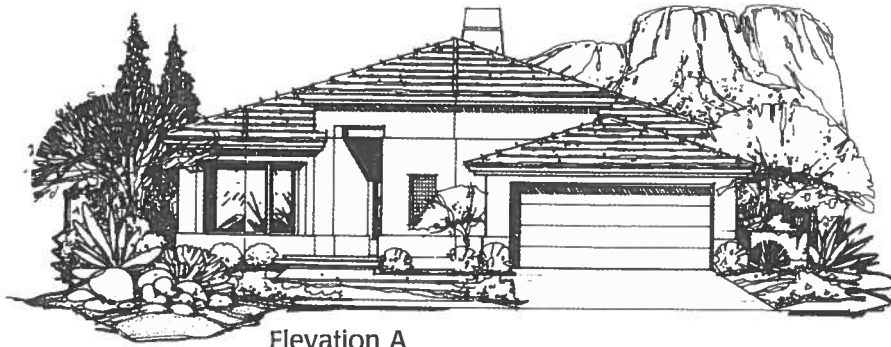


Because we strive to continually improve our homes, we reserve the right to modify the designs, interior and exterior features, and methods and materials of construction without notice or obligation.

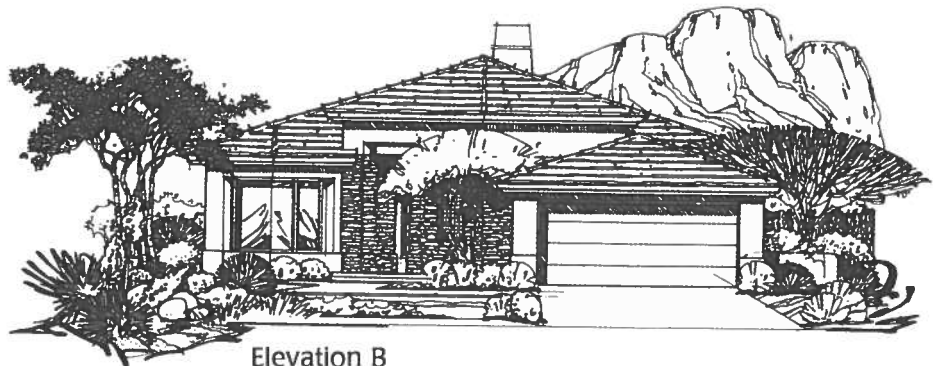
Sedona Golf Resort

THE OAK CREEK

PLAN 935



Elevation A



Elevation B



Elevation C



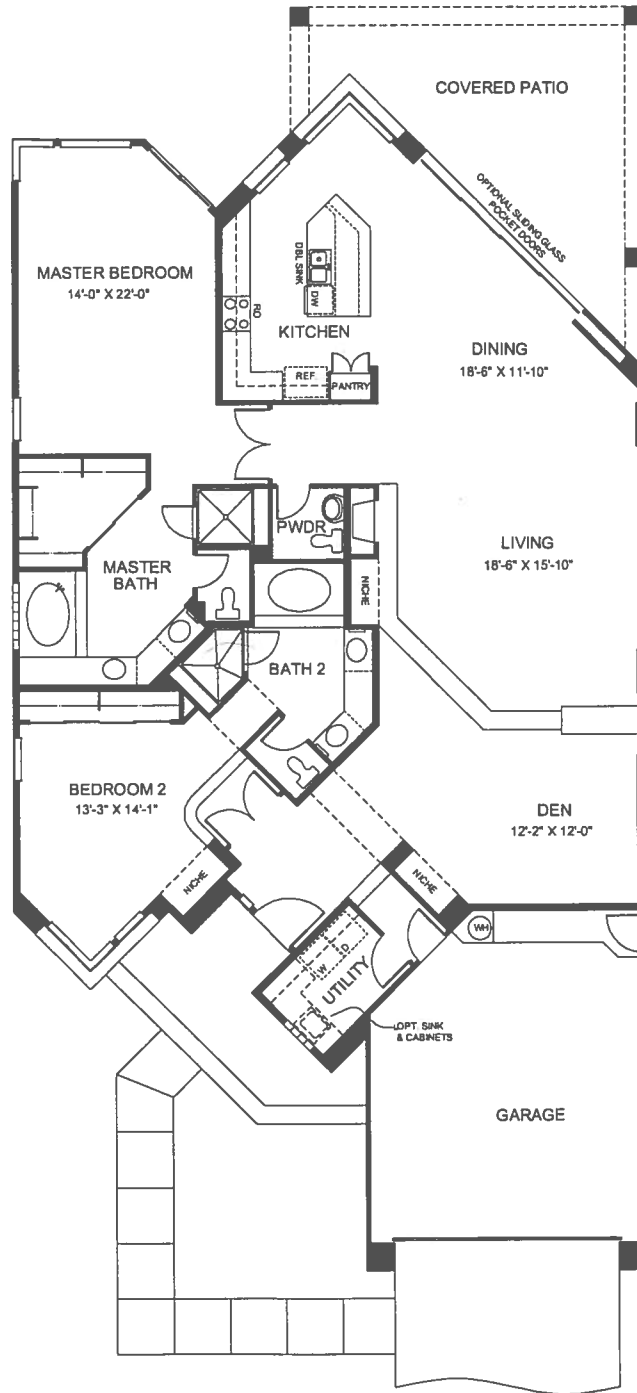
GOLDEN HERITAGE

H O M E S

A SUNCOR COMPANY

THE OAK CREEK

2,425 SQ. FT.

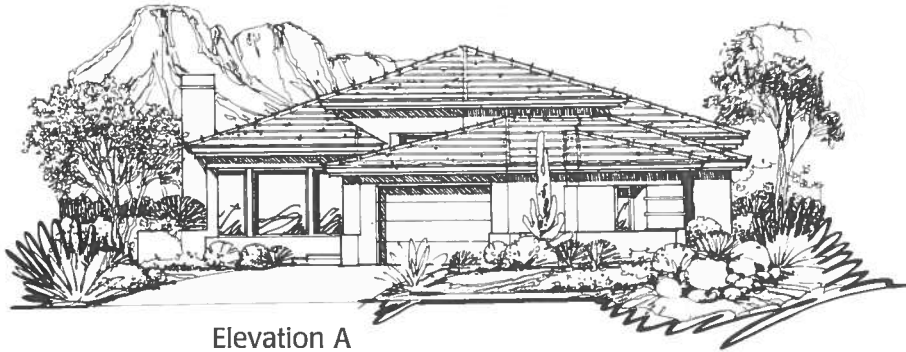


Because we strive to continually improve our homes, we reserve the right to modify the designs, interior and exterior features, and methods and materials of construction without notice or obligation.

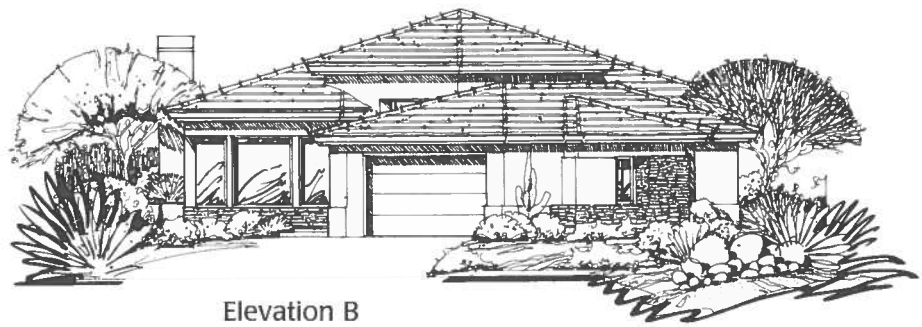
Sedona Golf Resort

THE SEDONA

PLAN 945



Elevation A



Elevation B



Elevation C



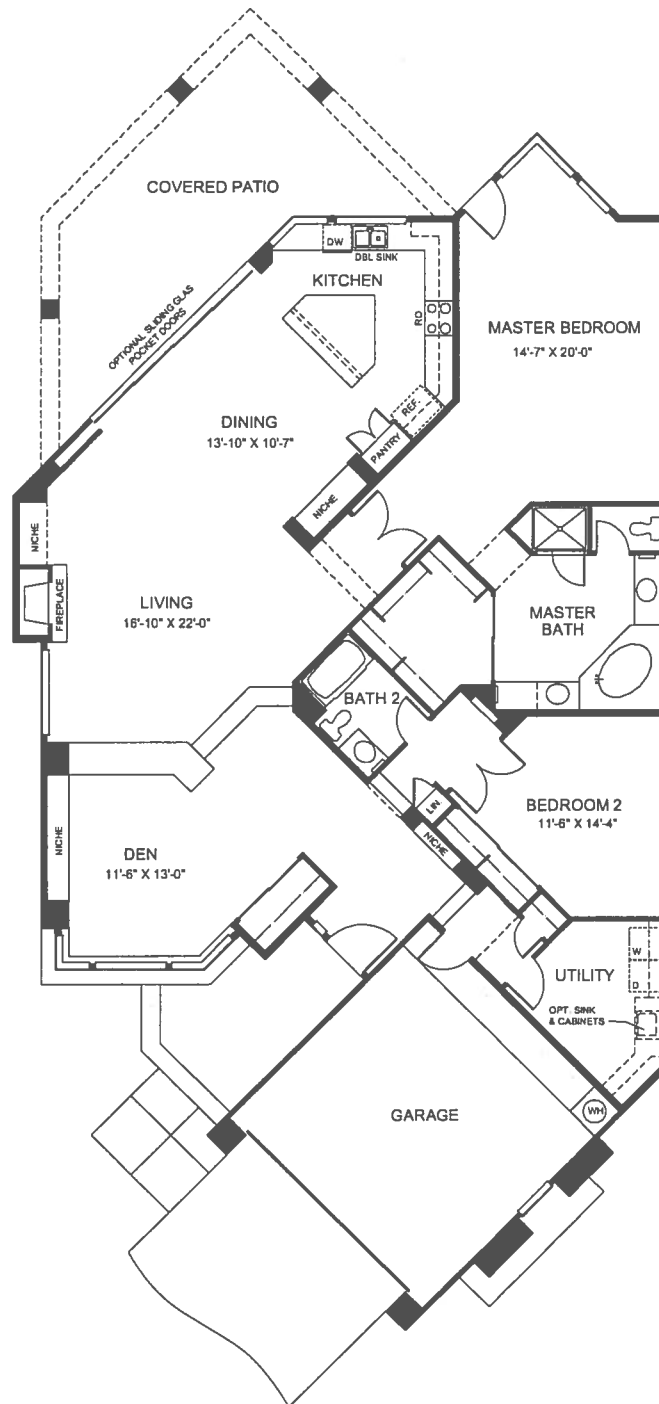
GOLDEN HERITAGE

H O M E S

A SUNCOR COMPANY

THE SEDONA

2,379 SQ. FT.



Because we strive to continually improve our homes, we reserve the right to modify the designs, interior and exterior features, and methods and materials of construction without notice or obligation.

LUXURY FEATURES

Interior Features At No Extra Cost

- 8 ft. interior 6-panel doors
- Dramatic raised ceilings
- Unique interior pot shelves
- Attractive polished brass door hardware
- Bright, cheerful kitchens with eating areas
- GE Profile appliances
- Touch control microwave hood
- Heavy duty 1/2 horsepower disposal
- Recessed lights (where shown)
- Self-rimming cast iron porcelain kitchen sink
- Corian kitchen countertops
- Gourmet kitchen island
- Self cleaning single or double oven (depending on plan)
- Ceramic glass-radiant cooktop and energy-saving dishwasher
- Designer oak or maple cabinets with hidden hinges in choices of style and finish
- Hand-troweled texture on walls and ceilings with rounded corners
- Luxurious master suites with mirrored wardrobe doors (where shown)
- Elegant master baths with oval tubs and double vanity bowls
- Lavish master shower with cultured marble surround, clear glass enclosure
- Cultured marble vanity top in secondary baths
- Cultured marble tub surround in secondary baths
- Mirrored wardrobe doors in secondary bedrooms (where shown)

- Laundry room cabinets above washer and dryer
- 50-gallon quick recovery electric water heater
- Water line for ice-maker refrigerator
- High-efficiency zoned air conditioning system with high efficiency heat pump
- Fireplace
- Automatic garage door opener
- Special detailed closets
- Decora light switches
- Smoke detectors
- Prewire for 4 telephone and 2 television outlets
- Prewire for 2 ceiling fan outlets

Exterior Features At No Extra Cost

- Concrete tile roofs
- Beautiful oak front entry door
- 2" concrete pop-outs at thresholds of all exterior doors
- Elegant arched windows (where shown)
- Dual pane insulated windows
- 2x6 frame construction at all exterior walls (livable areas)
- Covered patios (where shown)
- Biege window frames throughout
- Recessed exterior windows found exclusively in 2x6 frame construction
- Energy saving R-30 insulation at living area ceiling (livable areas)
- R-19 exterior wall insulation (livable areas)
- Insulated steel sectional garage door

- Beautiful garden walls with gates on each side
- 200 amp electrical service
- Fully landscaped with drip system
- Photo cell garage recessed lights
- Recessed lights (where shown)
- Side entrance garage service door (where shown)
- Hand applied stucco finish
- 2 or 3 car garages

Optional Features

- Security system
- Stereo speaker system
- Ceramic countertops
- Wet bar
- Additional ceiling fan outlets and switches
- Bonus rooms (where applicable)
- Gas is available as an option
- Elevation stone facing

Because of our commitment to quality, we constantly search for new and improved materials and, therefore, reserve the right to modify the designs, interior and exterior features, and methods and materials of construction without notice or obligation.

All plans, renderings and maps shown are artist's conception and not to scale. The sales office and model complex include some features which are not Standard Production items. Models may show interior designer features and items which are not included in the home. Some treatments, features, landscaping and built-ins are for display ideas only.

Golden Heritage Homes

Corporate Headquarters • 7025 East Greenway Parkway, Suite 100
Scottsdale, Arizona 85254

Sedona Golf Resort Phase II

MODEL HOMES

SALES CENTER

The Flagstaff / Plan 925

1,932 Square Feet
Two bedrooms, two baths, den
\$277,900*

The Sedona / Plan 945

2,379 Square Feet
Two bedrooms, two baths, den
\$301,900*

The Jerome / Plan 135

2,407 Square Feet
Three bedrooms, three baths
\$319,900

The Prescott / Plan 145

2,592 Square Feet
Three bedrooms,
two and one half baths
\$329,900

The Oak Creek / Plan 935

2,425 Square Feet
Two Bedroom, den, two and one half baths
\$299,900*

ADDITIONAL PLANS

The Carefree / Plan 915

1,900 Square Feet
Two Bedrooms, two baths, den
\$274,900*

The Payson / Plan 115

1,991 Square Feet
Two bedrooms, two baths, den
\$294,900

The Pinewood / Plan 125

2,196 Square Feet
Two bedrooms, two baths, den
\$305,900

Some lots have premiums. Please consult your sales executive for details.
Square footages are approximate. All plans are copyrighted.
Prices effective 01/31/00 and subject to change.

**At Parcels R-2 and S*



1-800-895-6938



GOLDEN HERITAGE

H O M E S

A SUNCOR COMPANY